

Cultural Commission City of Santa Clara, California

Utility Box Project Overview

Sponsored by the City of Santa Clara and its Cultural Commission, this program celebrates local art work and encourages regional artists to share their creativity with everyone in Santa Clara. Utility boxes tend to be eyesores in the community. Vibrant artwork helps deter the unsightly graffiti nuisance from our community and creates beautiful spaces for residents and visitors alike. We invite artists to participate in this unique program designed to transform common utility boxes into works of art for everyone to enjoy. The art work of participating artists will add beauty to the streetscape of Santa Clara for years to come.

Student artist completed utility box was designed by Sumaiya Elahi, Wilcox High School student, and is located at the corner of Calabazas & Monroe.



Imagine how your art can transform a city street!



We BELIEVE communities come alive with Arts and Culture.

Artist Participation Guide

To participate in this worthwhile activity, submit the materials listed below to the City of Santa Clara. A copy of the template is available at the end of this guide.

- A completed application (be sure to fill out and obtain signatures for the release of liability)
- A completed artist bio
- A color rendering of your proposed design for the artwork. Each side of the box is to be represented by a paper of 8" x 11" or larger. Follow the template provided as the format to tape the pages together. Artwork submitted must be an accurate depiction of your painting.

Materials may be submitted by mail or in person.

For mail send to:
City of Santa Clara
Attn: CC Liaison
1500 Warburton Avenue
Santa Clara, CA 95050

For questions, contact:
Cultural Commission
culturalcommission@santaclaraca.gov
408-615-2210

If your art work is selected, you will receive a letter and instructions detailing how to begin.

Policies and Guidelines

- Art work: using a majority of dark colors cannot be considered due to the potential for overheating the utility boxes.
- The City will supply the materials for you, instructions are provided when your art is selected.
- Artists are responsible for prepping the utility box, painting the box, and applying a clear coat to the finished design.
- Artists may enlist assistants. All artists and assistants must complete a release of liability form.
- Artists may select any 8 week period during the designated annual painting season. Artists may paint the utility box at their own leisure within *their* chosen 8 week period.
- All artwork must be completed within 8 weeks of the start date. If an unforeseeable emergency arises, the artist may request a 2 week extension by notifying the City Manager's office and the Cultural Commission.

**DEADLINE TO ENTER: 15th
OF THE MONTH PRIOR TO CULTURAL COMMISSION MEETING**

(Cultural Commission meetings occur on the first Monday of each month)

CULTURAL COMMISSION

City of Santa Clara

Utility Box Art Program Details
A Reflection of Your Community



Theme

Artists are encouraged to use Santa Clara subjects in their artwork, as appropriate.

Eligibility

- + All entries must be the original design and artwork of the entrant(s).
- Each entry must be sent with a completed official entry form and release of liability to be considered.

*Entries can be dropped off
at Santa Clara City Hall
1500 Warburton Ave.
Santa Clara, CA 95050*

- + Entries and all forms need to be submitted together as a single package.
- + Please do *not* permanently secure forms to artwork.

- + Painting must occur during an 6 -week window before January 4, 2016

Medium & Specifications

- + Each side of the utility box design must be represented by one sheet of paper 8.5 x 11 or larger. Painting, colored pencils, pen and ink, are all acceptable media.
- + Each sheet must be labeled on the back and taped together as in the template provided in the participation guide. (Label with side #, your name, and artwork title)
- + Every submission should be taped together and easily foldable.
- + Important: Artwork using a majority of dark colors cannot be considered due to the potential for overheating the utility boxes.
- + Entries that use a copyrighted or trademarked image will not be accepted.
- + Entries must not be plagiarized, stolen, or copied from any other source. Entries must not defame or invade the rights of any person, living or dead.
- + Entries not adhering to these guidelines will not be considered.

Judging

- + A panel of judges selected by the Cultural Commission will evaluate entries based on composition and originality Judging will take place on an ongoing basis. Winner(s) will be officially announced at the next appropriate Cultural Commission meeting at City Hall.

Awards

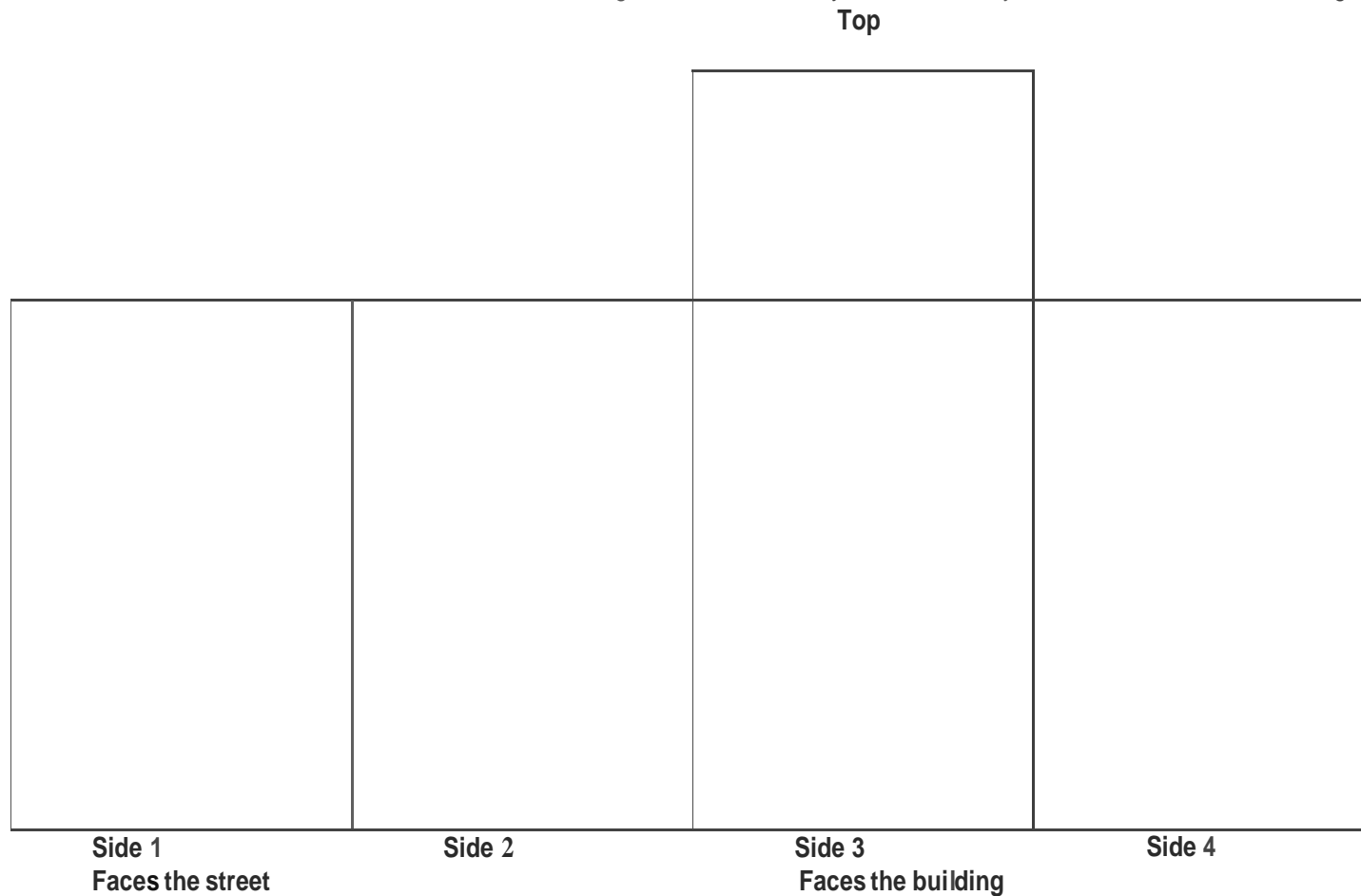
- + A \$250 stipend per utility box will be awarded to the winner(s) upon completion of the project.
- + Artist recognition via your signature on the utility box (no larger than 3"x5").
- + Detailed inclusion of the artist(s) name, artwork title, and photo of the artwork may be featured in the City of Santa Clara's newspaper, cable channel and other promotional materials.

For more information: email culturalcommission@santaclaraca.gov or call the Cultural Commission Staff Liaison at 408.615.2210.

**DEADLINE TO ENTER: 15th
OF THE MONTH PRIOR TO CULTURAL COMMISSION MEETING**

City of Santa Clara Utility Box Template

This is a diagram of a typical utility box showing four sides and the top. Use it to show the image you would like to paint as it would be painted. From past experience, we have found that unique colors and bold graphics work well, along with bright images that can be seen from a distance. Please avoid the use of dark colors over large areas, as this may cause the utility box to absorb heat and damage the equipment.



Note: Actual utility boxes vary in size and shape. Please be prepared to adjust your artwork to fit the box you are assigned. Thank you for your flexibility.

CULTURAL COMMISSION

City of Santa Clara
Utility Art Box Program
Application



PERSONAL INFORMATION

Thank you for your interest in the City of Santa Clara Utility Art Box Program. Please print clearly in English and complete the application thoroughly. Submit this form along with a completed artist biography, and color rendering of proposed design.
(If submitting as a group please complete a form for each entrant and submit together with artwork)

Last Name

First Name

Date Submitted

Mailing Address (street number and name, City, State, Zip Code)

Home Phone

Cell Phone

Email

If Under 18 Years Old:

First name

Home Phone

Cell Phone

Parent or Guardian Last Name

I agree to provide or find adult supervision at the designated location during all project painting hours.
Parent Signature *also include release of liability form

Cultural Commission Utility Box Art Project
ARTWORK/ARTIST DESCRIPTION

Title of Submission

Artwork to be returned? Yes or No

(If yes, include a self-addressed and stamped envelope)

Design Description (rendering must be submitted in color in the template provided, showing all sides and top)

How does this artistic rendering represent the City of Santa Clara community?

Please return completed form & accompanying materials to:

City of Santa Clara
ATTN: Cultural Commission Staff Liaison
1500 Warburton Ave.
Santa Clara, CA 95050
408.615 .2210

**CITY OF SANTA CLARA, CALIFORNIA
UTILITY BOX ART PROGRAM PARTICIPANT
RELEASE OF LIABILITY FORM**

DATE _____

(PLEASE PRINT OR TYPE)

PARTICIPANT'S NAME _____

ADDRESS _____

CITY _____ STATE/ZIP _____

HOME TELEPHONE _____ AGE _____ DOB ____/____/____

PARENT'S NAME _____

ADDRESS _____

(IF DIFFERENT THAN PARTICIPANT'S ADDRESS)

Participant does hereby release the City of Santa Clara, California, a chartered California municipal corporation, ("City") its City Council, representatives, employees, volunteers, agents and/or assigns, as well as all other participants, from any and all claims, obligations, causes of action, and liability of any kind, arising from the Participant's involvement in any events conducted as part of the Utility Box Art Program, or in connection with any work, labor, or services performed by the undersigned for and on behalf of any of the participants in events conducted and sponsored by the Utility Box Art Program, City, or otherwise.

This release is intended as a full and complete release covering any possible claims, contingent or otherwise, involving personal injury or property damage which may arise in connection with the Utility Box Art Program.

This release includes, although it is not specifically limited to, any claim for any injuries or damages which the undersigned may suffer in connection with the Utility Box Art Program related actions in connection with any work, labor, or services performed by the undersigned for or on behalf of City or the Utility Box Art Program, regardless of whether the undersigned is actually participating in said activities, any injury to the person or damage to property which may be suffered by the undersigned as the result of or arising out of the Utility Box Art Program.

The consideration for this release is the undersigned's participation in the Utility Box Art Program, the permission granted by City to the undersigned to enter onto City property or to participate in events and activities sponsored by the Utility Box Art Program, and the permission granted by City to the undersigned to engage in any City sanctioned or sponsored events.

To the extent permitted by law, Participant agrees to protect, defend, hold harmless, and indemnify City, its Council, officers, employees, volunteers and agents, from and against all claims, injury, liability, loss, cost, and expense, arising out of, occurring by reason of, or in any way connected with Participant's participation in the Utility Box Art Program, except for acts arising out of the sole negligence of City.

ADULT PARTICIPANT

Signature: _____

Print Name: _____

Date: _____

PARENT OR GUARDIAN OF MINOR PARTICIPANTS

Name of Minor Child: _____ Date: _____

Signature of Parent or Guardian: _____

Print Name: _____