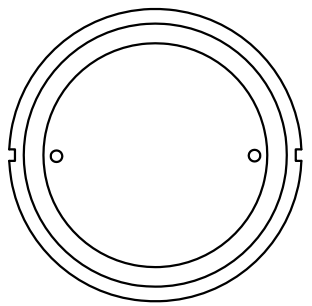
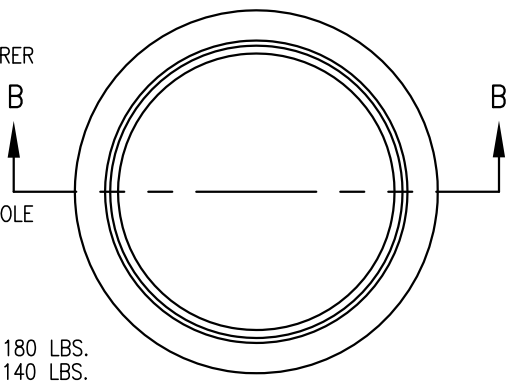


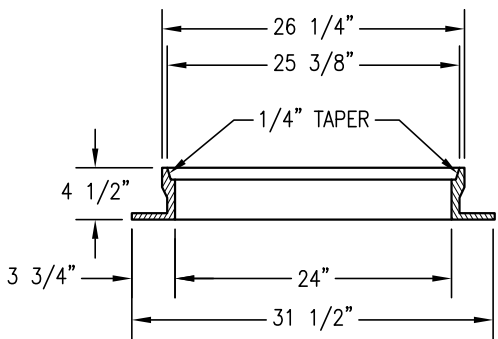
**MANHOLE COVER - PLAN VIEW**  
NO SCALE



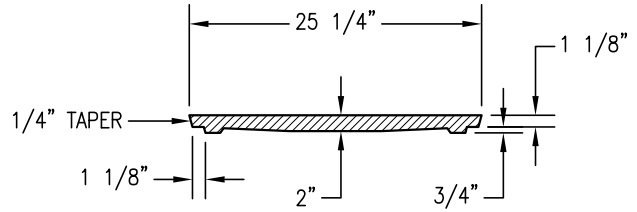
**MANHOLE COVER - BOTTOM VIEW**  
NO SCALE



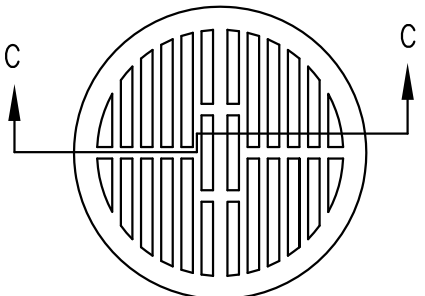
**MANHOLE FRAME - PLAN VIEW**  
NO SCALE



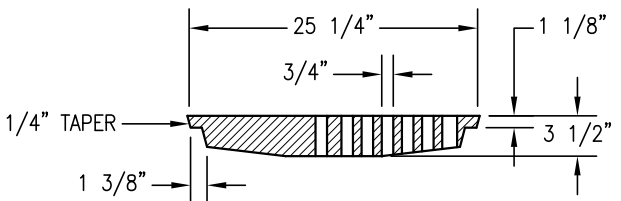
**SECTION B-B**  
NO SCALE



**SECTION A-A**  
NO SCALE



**MANHOLE GRATE - PLAN VIEW**  
NO SCALE



**SECTION C-C**  
NO SCALE

**NOTES:**

1. ALL MATERIAL TO BE CAST IRON DIPPED IN ASPHALT PAINT.
2. FRAME, GRATE AND COVER SHALL BE SUITABLE FOR H-20 LOADING.
3. COVER SHALL HAVE EITHER "SANITARY SEWER" FOR SANITARY SEWERS OR "STORM DRAIN" FOR STORM DRAINS IN RAISED LETTERS THAT ARE 1-1/2" TALL.



DRAWN BY: K. TRAN  
 CHECKED BY: F. AMIN  
 APPROVED BY: G. GOMEZ  
 DATE: DECEMBER 2014

**MANHOLE FRAME,  
COVER AND GRATE**

CITY OF SANTA CLARA

**DS-3**

PAGE: 45