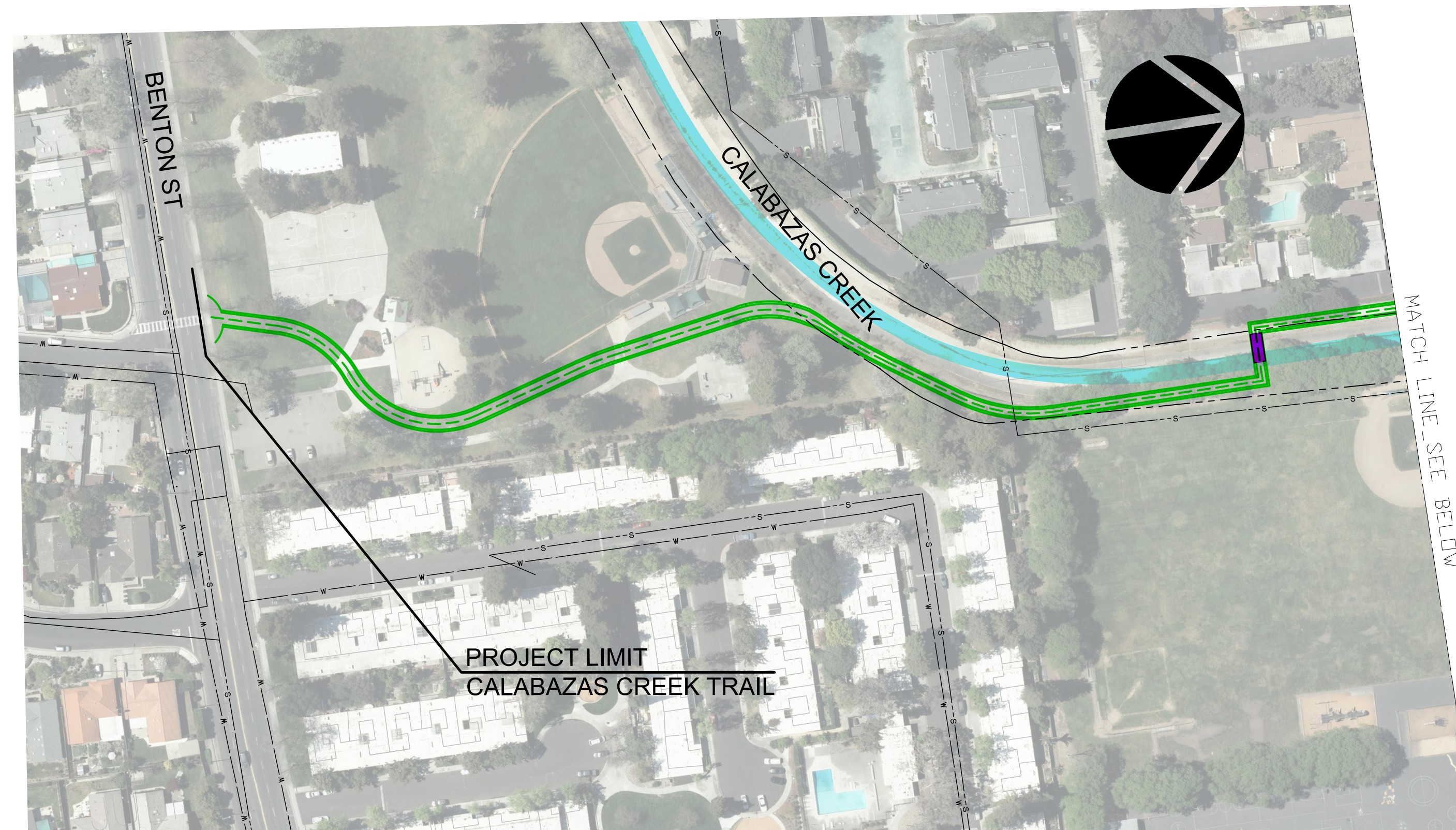
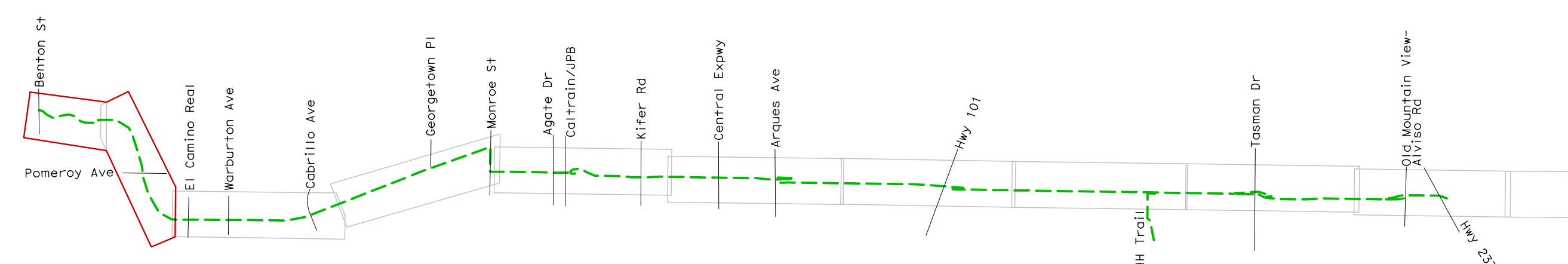


# CALABAZAS CREEK - PRELIMINARY TRAIL ALIGNMENT PLAN

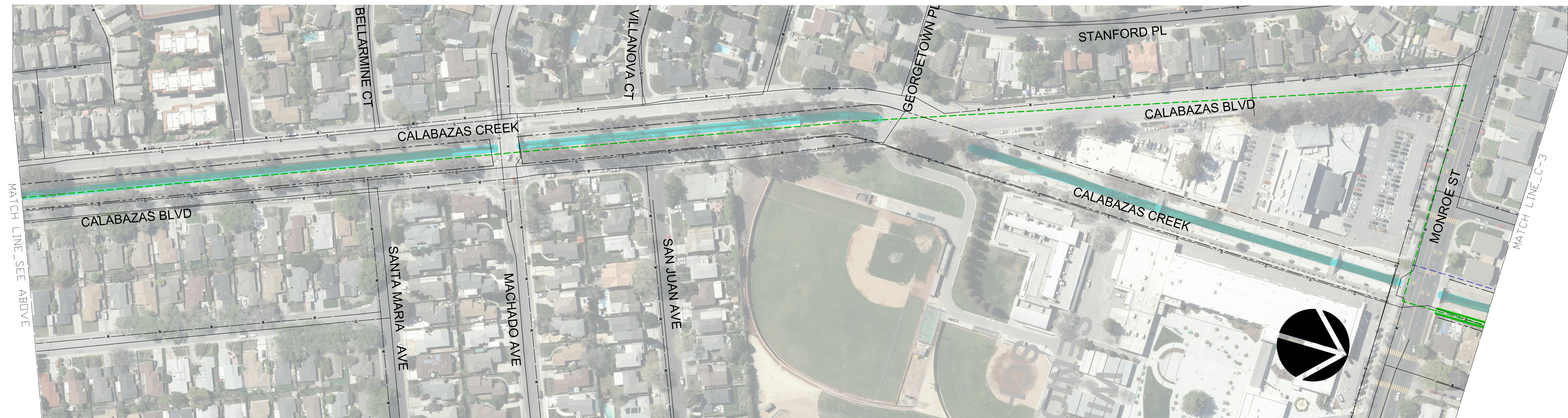
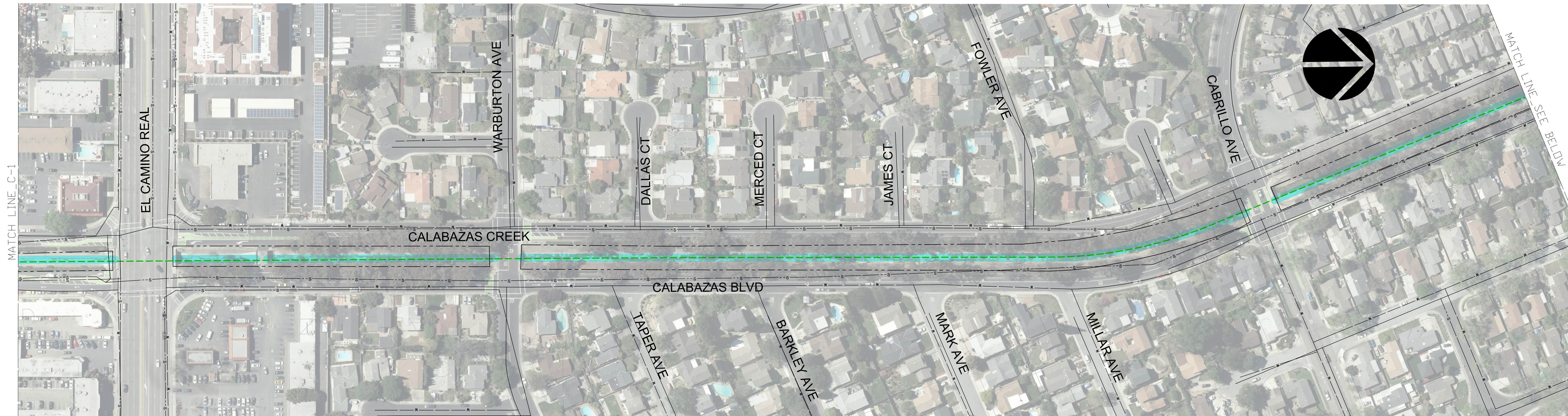


**LEGEND:**

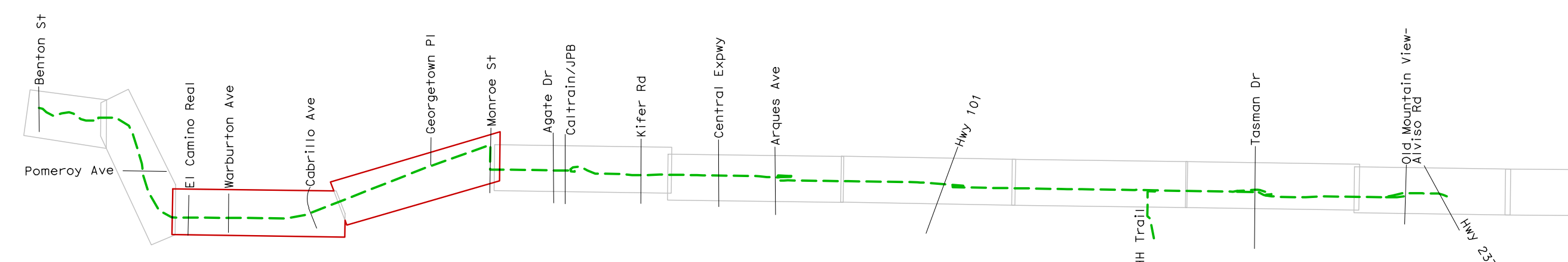
- |  |                           |  |                           |
|--|---------------------------|--|---------------------------|
|  | PROPOSED BIKE TRAIL       |  | RETAINING WALL            |
|  | TUNNELS                   |  | ALTERNATE TRAIL ALIGNMENT |
|  | UNDERPASSES AND RAMPS     |  | Right of Way Limit        |
|  | OVERPASSES                |  | Creek                     |
|  | PEDESTRIAN BRIDGES        |  |                           |
|  | EXIST. PEDESTRIAN BRIDGES |  |                           |



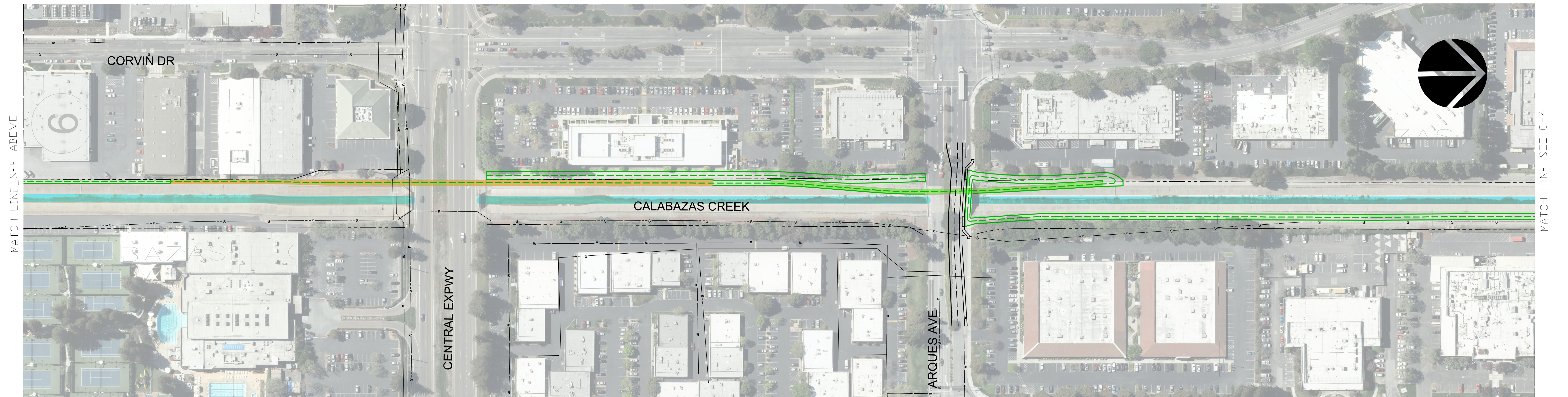
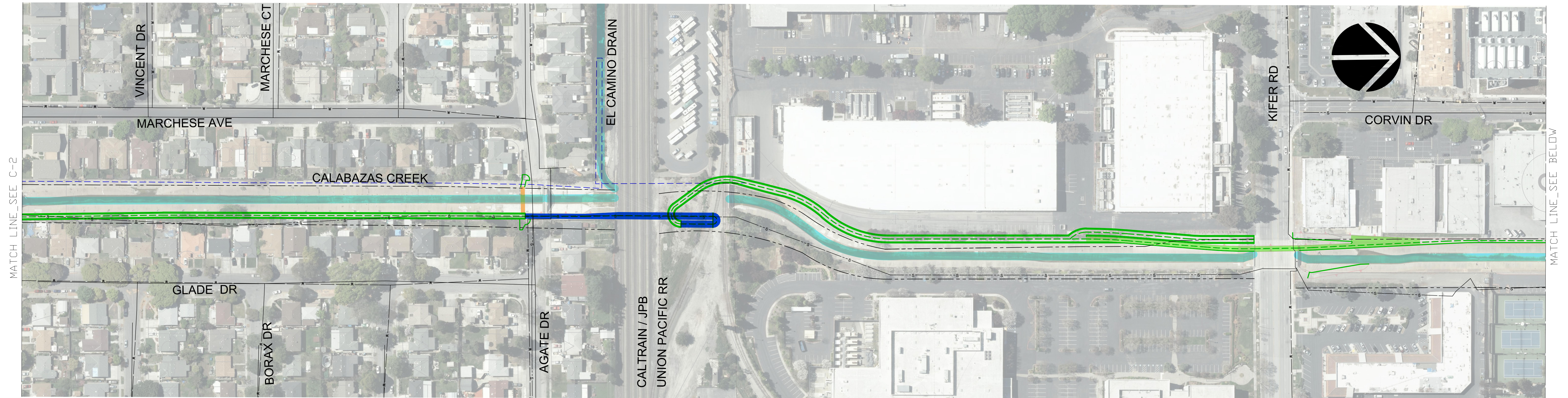
# CALABAZAS CREEK - PRELIMINARY TRAIL ALIGNMENT PLAN



- LEGEND:**
- PROPOSED BIKE TRAIL
  - TUNNELS
  - UNDERPASSES AND RAMPS
  - OVERPASSES
  - PEDESTRIAN BRIDGES
  - EXIST. PEDESTRIAN BRIDGES
  - RETAINING WALL
  - ALTERNATE TRAIL ALIGNMENT
  - Right of Way Limit
  - Creek

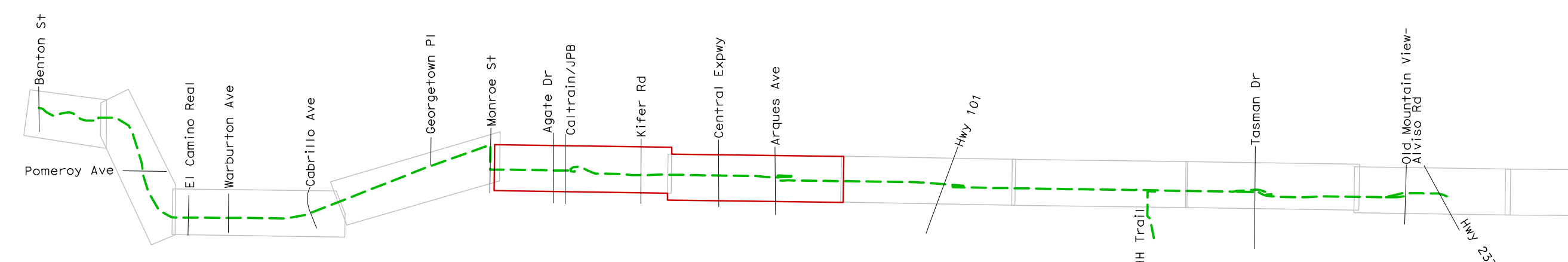


# CALABAZAS CREEK - PRELIMINARY TRAIL ALIGNMENT PLAN

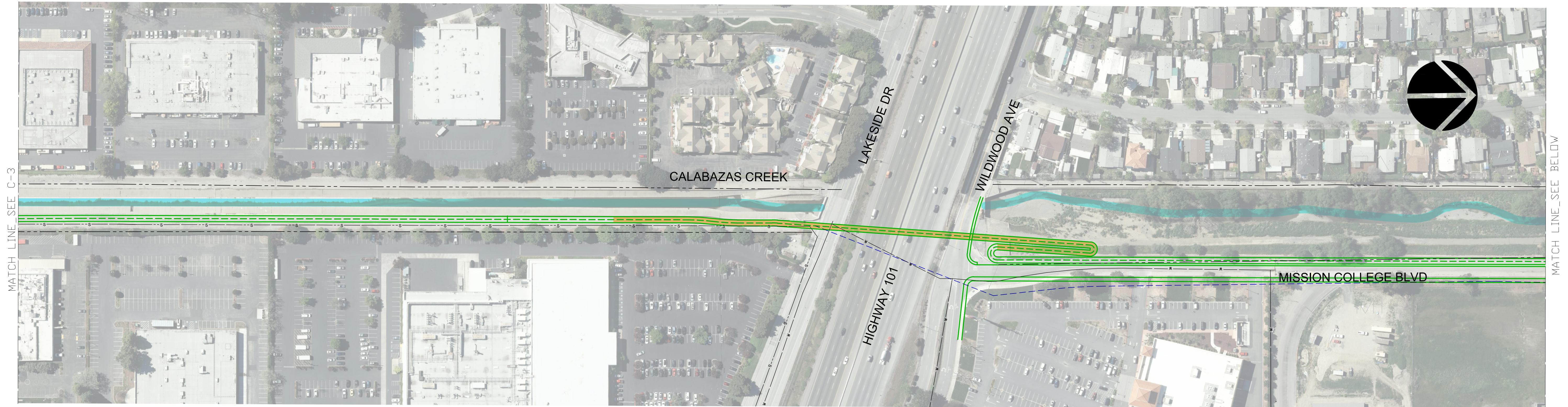


**LEGEND:**

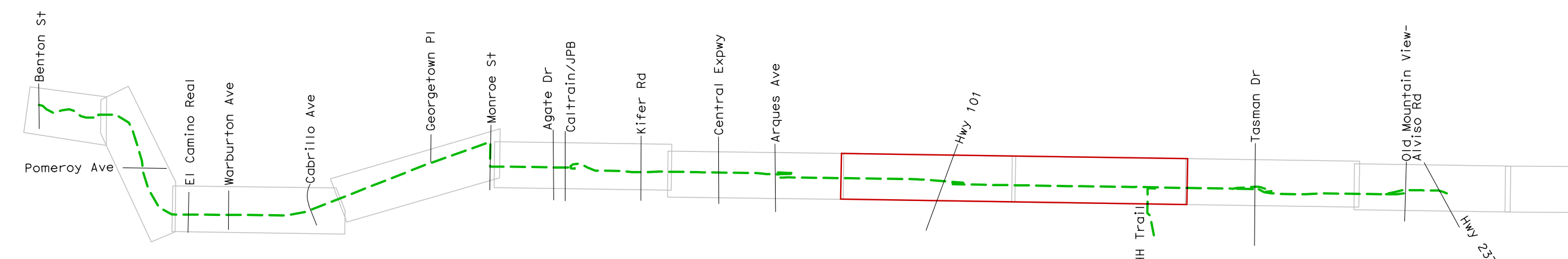
- PROPOSED BIKE TRAIL
- TUNNELS
- UNDERPASSES AND RAMPS
- OVERPASSES
- PEDESTRIAN BRIDGES
- EXIST. PEDESTRIAN BRIDGES
- RETAINING WALL
- ALTERNATE TRAIL ALIGNMENT
- Right of Way Limit
- Creek



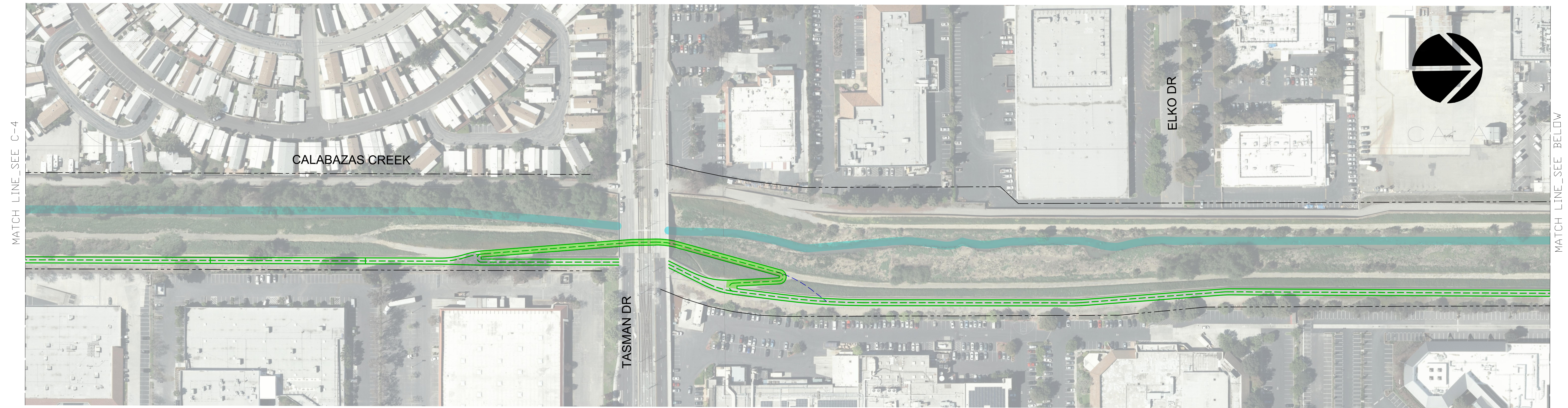
# CALABAZAS CREEK - PRELIMINARY TRAIL ALIGNMENT PLAN



- LEGEND:**
- PROPOSED BIKE TRAIL
  - TUNNELS
  - UNDERPASSES AND RAMPS
  - OVERPASSES
  - PEDESTRIAN BRIDGES
  - EXIST. PEDESTRIAN BRIDGES
  - RETAINING WALL
  - ALTERNATE TRAIL ALIGNMENT
  - Right of Way Limit
  - Creek



# CALABAZAS CREEK - PRELIMINARY TRAIL ALIGNMENT PLAN



**LEGEND:**

-  PROPOSED BIKE TRAIL
-  TUNNELS
-  UNDERPASSES AND RAMPS
-  OVERPASSES
-  PEDESTRIAN BRIDGES
-  EXIST. PEDESTRIAN BRIDGES
-  RETAINING WALL
-  ALTERNATE TRAIL ALIGNMENT
-  Right of Way Limit
-  Creek

