

City of
Santa Clara

Creek Trail Network
Expansion Master Plan

**Bicycle and Pedestrian
Advisory Committee (BPAC)**

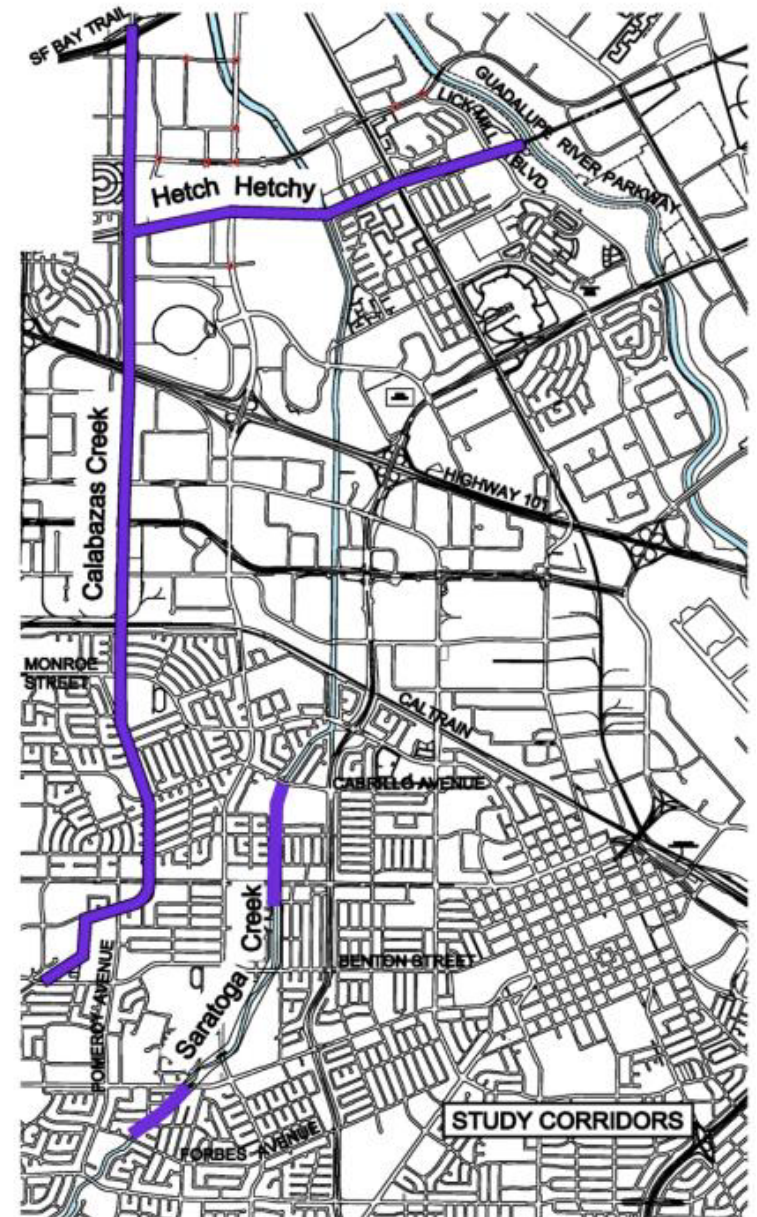
September 20, 2017



**City of
Santa Clara**
The Center of What's Possible

Master Plan Study Areas

- Calabazas Creek from Benton Street to the Bay Trail just north of Highway 237
- Hetch Hetchy from Calabazas Creek to the Guadalupe River
- Saratoga Creek from Forbes Avenue to Homeridge Park and from Central Park to Monroe Street



Master Plan Scope of Work

Undertaking:

- **Engineering Evaluation**
- **Stakeholder Coordination**
- **Public Outreach**

Preparing:

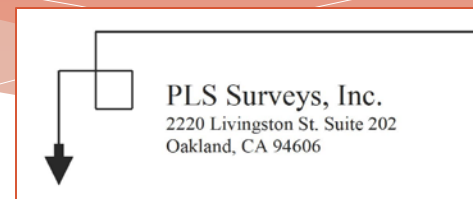
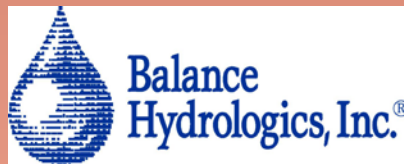
A Trail Master Plan that identifies trail alignments and crossing solutions and includes design guidelines and budget estimates.

Evaluating:

The Trail Master Plan under the California Environmental Quality Act (CEQA) to assess impacts.

Creek Trail Network Expansion Master Plan and CEQA Review

Consultant Team



Saratoga Creek



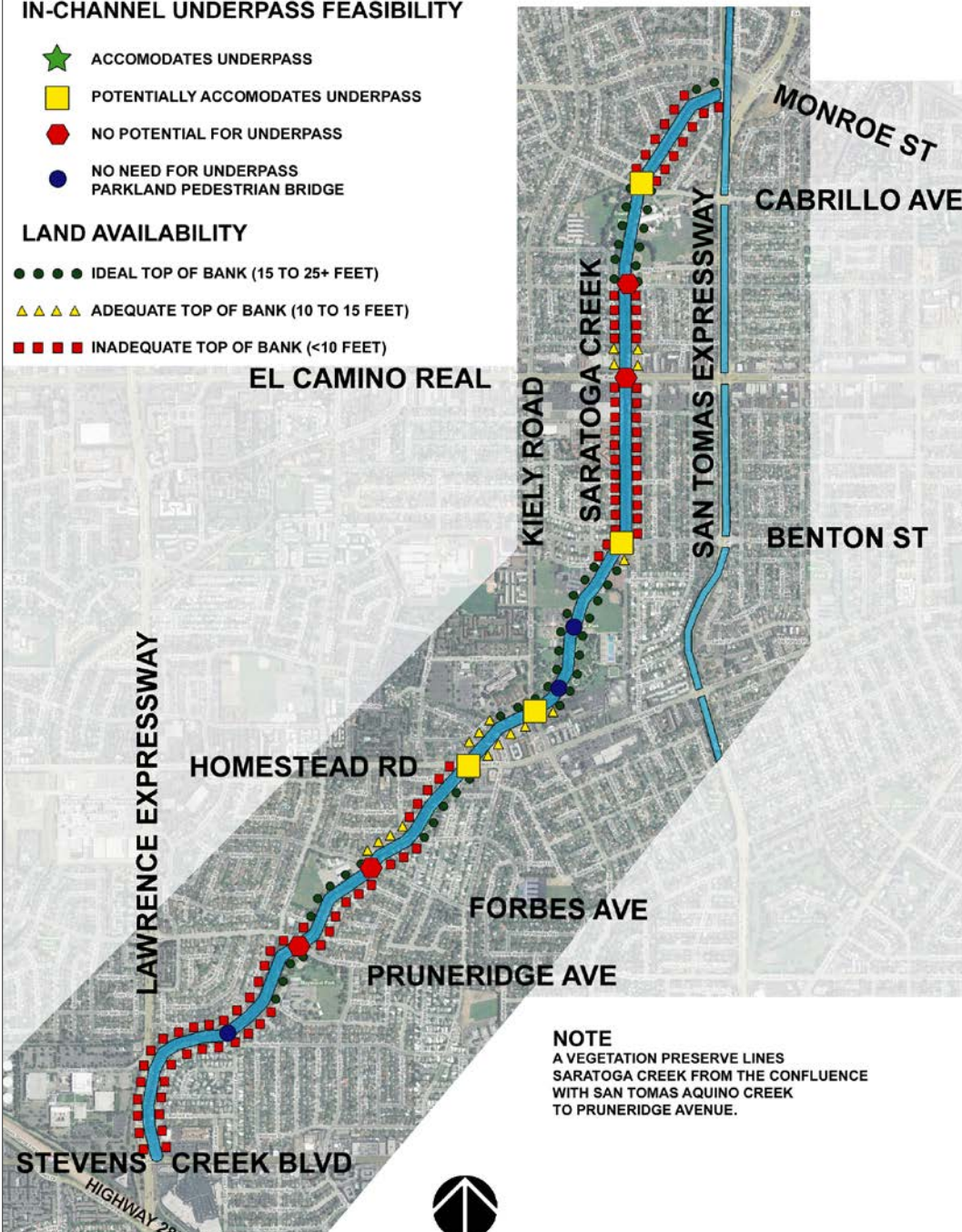
LEGEND

IN-CHANNEL UNDERPASS FEASIBILITY

- ★ ACCOMODATES UNDERPASS
- POTENTIALLY ACCOMODATES UNDERPASS
- NO POTENTIAL FOR UNDERPASS
- NO NEED FOR UNDERPASS
PARKLAND PEDESTRIAN BRIDGE

LAND AVAILABILITY

- IDEAL TOP OF BANK (15 TO 25+ FEET)
- ▲▲▲ ADEQUATE TOP OF BANK (10 TO 15 FEET)
- INADEQUATE TOP OF BANK (<10 FEET)



NOTE
A VEGETATION PRESERVE LINES
SARATOGA CREEK FROM THE CONFLUENCE
WITH SAN TOMAS AQUINO CREEK
TO PRUNERIDGE AVENUE.

Saratoga Creek Land Availability Map



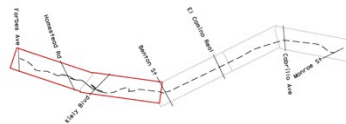
**City of
Santa Clara**
The Center of What's Possible

SARATOGA CREEK - PRELIMINARY TRAIL ALIGNMENT PLAN



LEGEND:

- ▬ PROPOSED BIKE TRAIL
- ▬ TUNNELS
- ▬ UNDERPASSES AND RAMP'S
- ▬ OVERPASSES
- ▬ PEDESTRIAN BRIDGES
- ▬ EXIST. PEDESTRIAN BRIDGES
- # PHOTO LOCATION
- ▬ RETAINING WALL
- ▬ ALTERNATE TRAIL ALIGNMENT
- ▬ Right of Way Limit
- ▬ Creek



Saratoga Creek Homeridge Park to Forbes Avenue



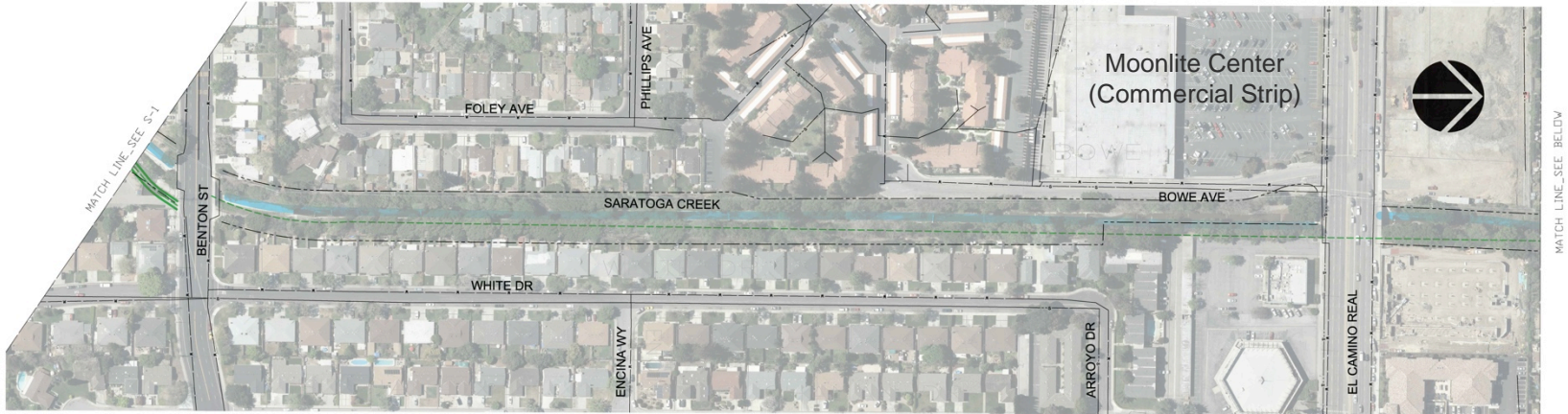
Pathway through Homeridge Park.



Creekside connection to Forbes Avenue via pedestrian bridge at Stevenson Street.



SARATOGA CREEK - PRELIMINARY TRAIL ALIGNMENT PLAN



- LEGEND:**
- PROPOSED BIKE TRAIL
 - TUNNELS
 - UNDERPASSES AND RAMP
 - OVERPASSES
 - PEDESTRIAN BRIDGES
 - EXIST. PEDESTRIAN BRIDGES
 - # PHOTO LOCATION

- RETAINING WALL
- - - ALTERNATE TRAIL ALIGNMENT
- - - Right of Way Limit
- Creek



Saratoga Creek Cabrillo to El Camino Real



School drop off and pick up at traffic at Cabrillo Middle School.



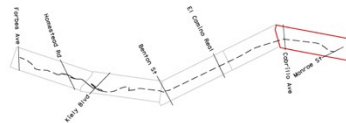
Fire Road access and pathway adjacent to Saratoga Creek and Cabrillo Middle School.



SARATOGA CREEK - PRELIMINARY TRAIL ALIGNMENT PLAN



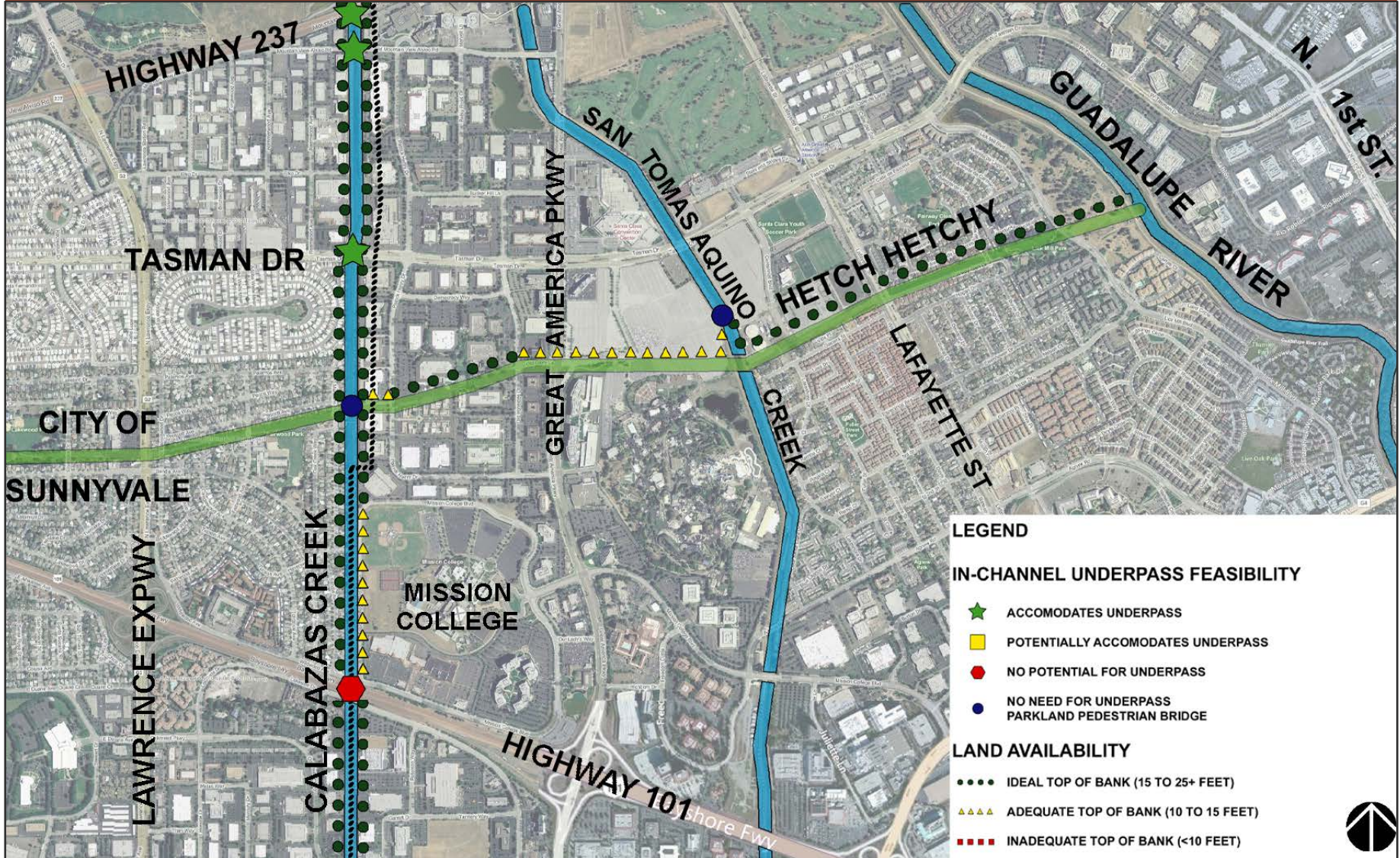
- LEGEND:
- PROPOSED BIKE TRAIL
 - TUNNELS
 - UNDERPASSES AND RAMP
 - OVERPASSES
 - PEDESTRIAN BRIDGES
 - EXIST. PEDESTRIAN BRIDGES
 - # PHOTO LOCATION
 - RETAINING WALL
 - - - ALTERNATE TRAIL ALIGNMENT
 - - - Right of Way Limit
 - Creek



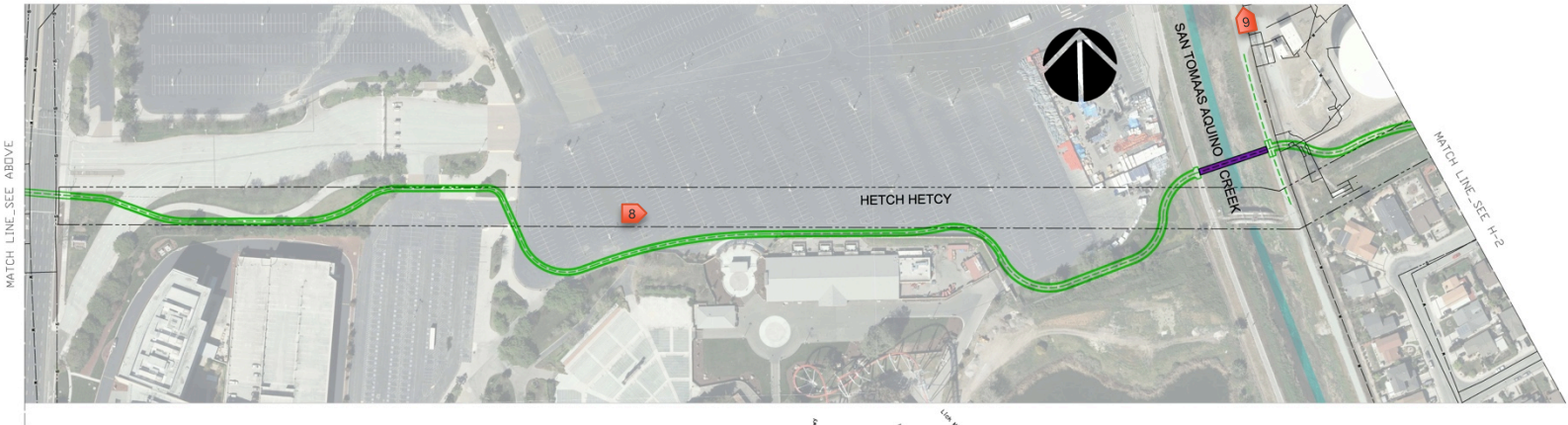
Hetch Hetchy Right of Way



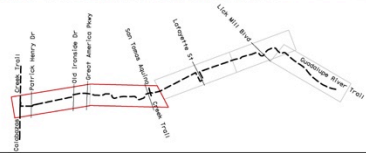
Hetch Hetchy Right of Way Land Availability Map



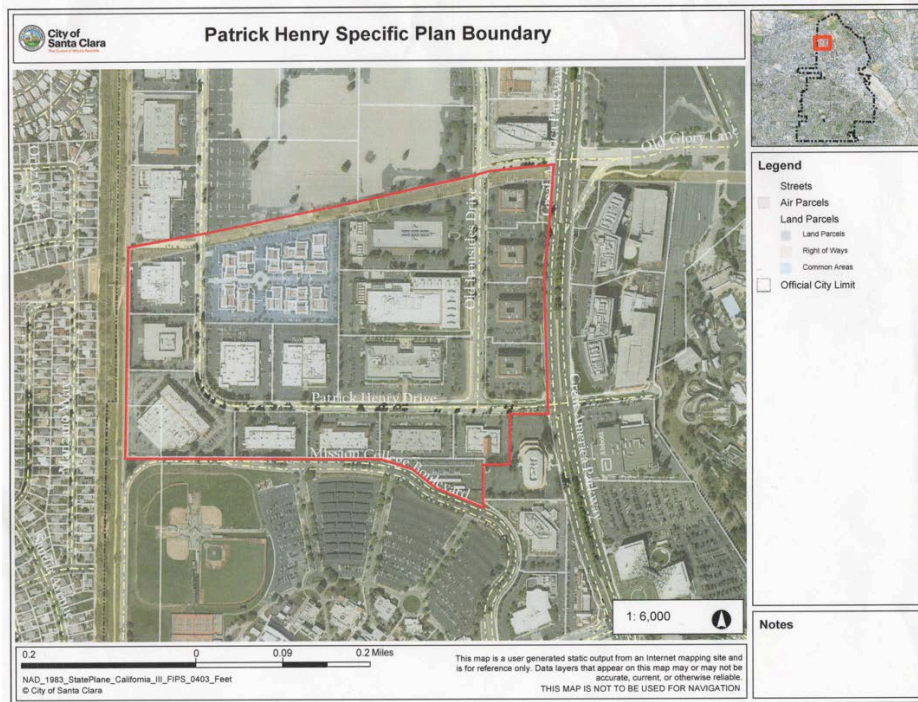
HETCH HETCHY - PRELIMINARY TRAIL ALIGNMENT PLAN



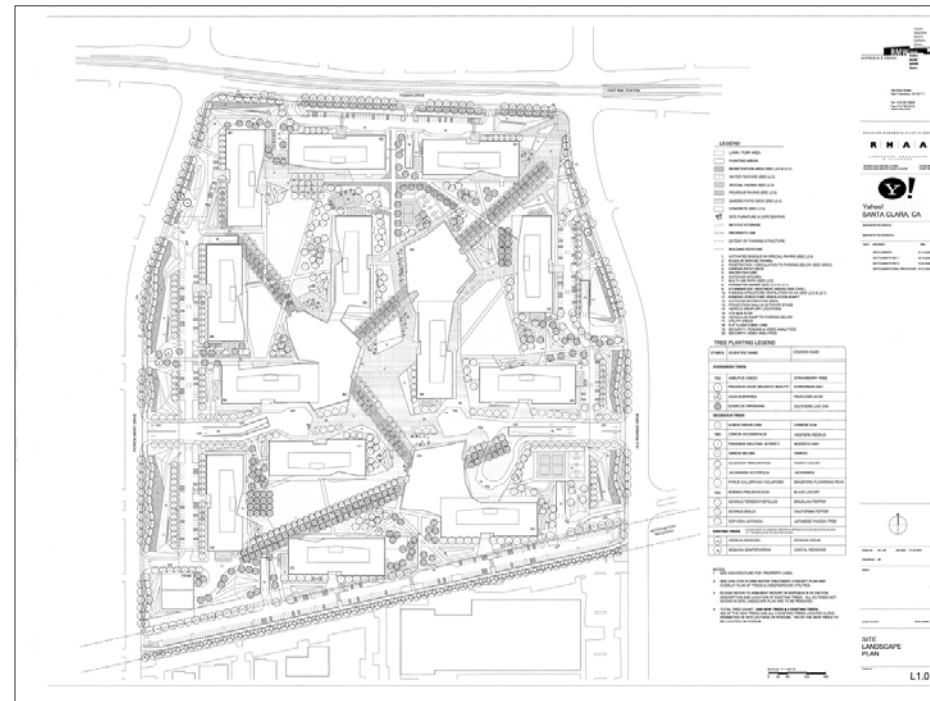
- LEGEND:**
- PROPOSED BIKE TRAIL
 - TUNNELS
 - UNDERPASSES AND RAMPS
 - OVERPASSES
 - PEDESTRIAN BRIDGES
 - EXIST. PEDESTRIAN BRIDGES
 - PHOTO LOCATION
 - RETAINING WALL
 - ALTERNATE TRAIL ALIGNMENT
 - Right of Way Limit



Opportunities to create a linear park/trail on Hetch Hetchy ROW between the Calabazas Creek Trail and Great America Parkway



Upcoming Patrick Henry Specific Plan.



The LeEco site (former Yahoo! property).



Hetch Hetchy ROW between Great America Parkway and San Tomas Aquino Creek Trail



ROW through Great America/Stadium parking area.











Connection to San Tomas Aquino Creek Trail.

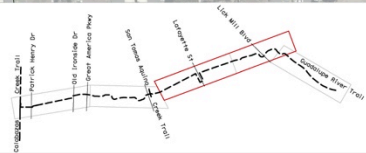


HETCH HETCHY - PRELIMINARY TRAIL ALIGNMENT PLAN



LEGEND:

-  PROPOSED BIKE TRAIL
-  TUNNELS
-  UNDERPASSES AND RAMP
-  OVERPASSES
-  PEDESTRIAN BRIDGES
-  EXIST. PEDESTRIAN BRIDGES
-  PHOTO LOCATION
-  RETAINING WALL
-  ALTERNATE TRAIL ALIGNMENT
-  Right of Way Limit



Existing linear park between Lafayette Street and Lick Mill Blvd.

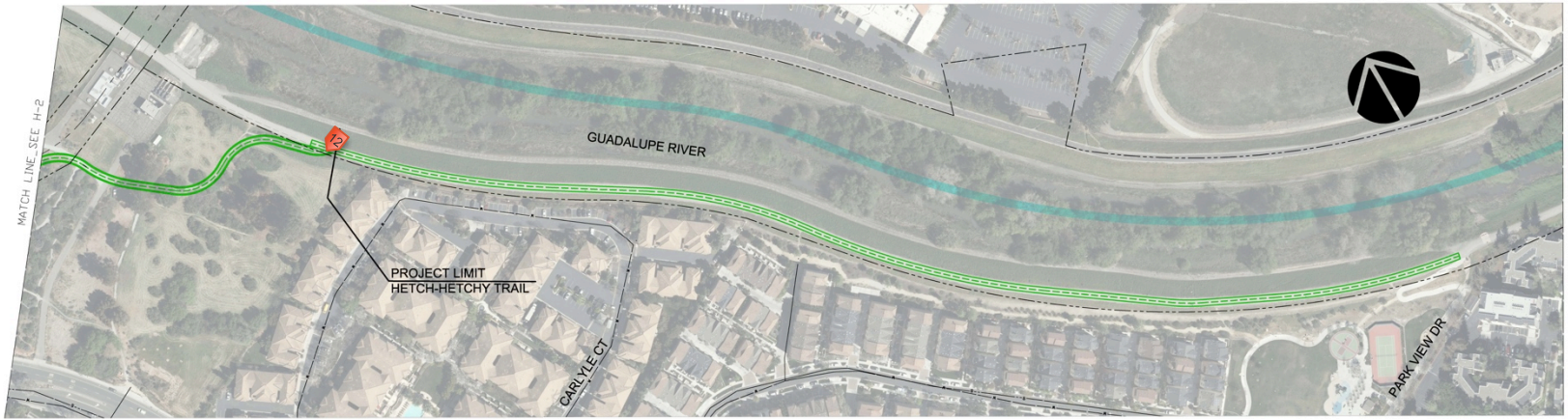


Hetch Hetchy adjacent to Fairway Glen Drive, looking south.

Pathway within Ulistac Natural Area.



HETCH HETCHY - PRELIMINARY TRAIL ALIGNMENT PLAN



- LEGEND:**
- PROPOSED BIKE TRAIL
 - TUNNELS
 - UNDERPASSES AND RAMP
 - OVERPASSES
 - PEDESTRIAN BRIDGES
 - EXIST. PEDESTRIAN BRIDGES
 - ◆ PHOTO LOCATION
 - RETAINING WALL
 - ALTERNATE TRAIL ALIGNMENT
 - Right of Way Limit

Hetch Hetchy connection to Guadalupe River Parkway



Ramp connecting Ulistac Natural Area to Guadalupe River Parkway.



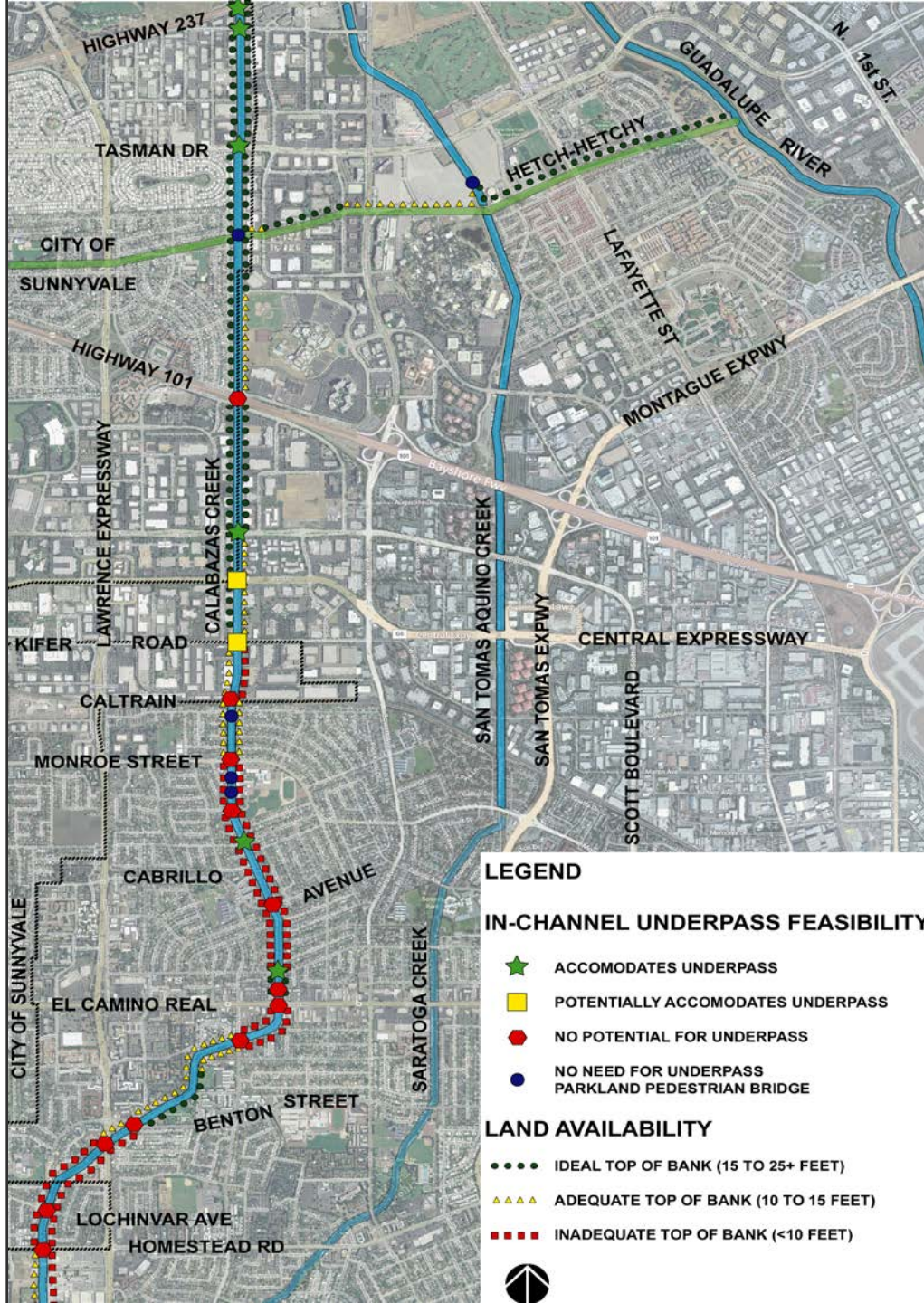
Trail paving would be extended to Thamien Park to link to the River Oaks ped/bike bridge.



Calabazas Creek



Calabazas Creek Land Availability Map



CALABAZAS CREEK - PRELIMINARY TRAIL ALIGNMENT PLAN



- LEGEND:**
- PROPOSED BIKE TRAIL
 - TUNNELS
 - UNDERPASSES AND RAMPS
 - OVERPASSES
 - PEDESTRIAN BRIDGES
 - EXIST. PEDESTRIAN BRIDGES
 - # PHOTO LOCATION
 - RETAINING WALL
 - - - ALTERNATE TRAIL ALIGNMENT
 - - - Right of Way Limit
 - Creek



Calabazas Creek - Pomeroy to Benton with Connection to Carmichael Park



Looking upstream (south) opposite Carmichael Park.

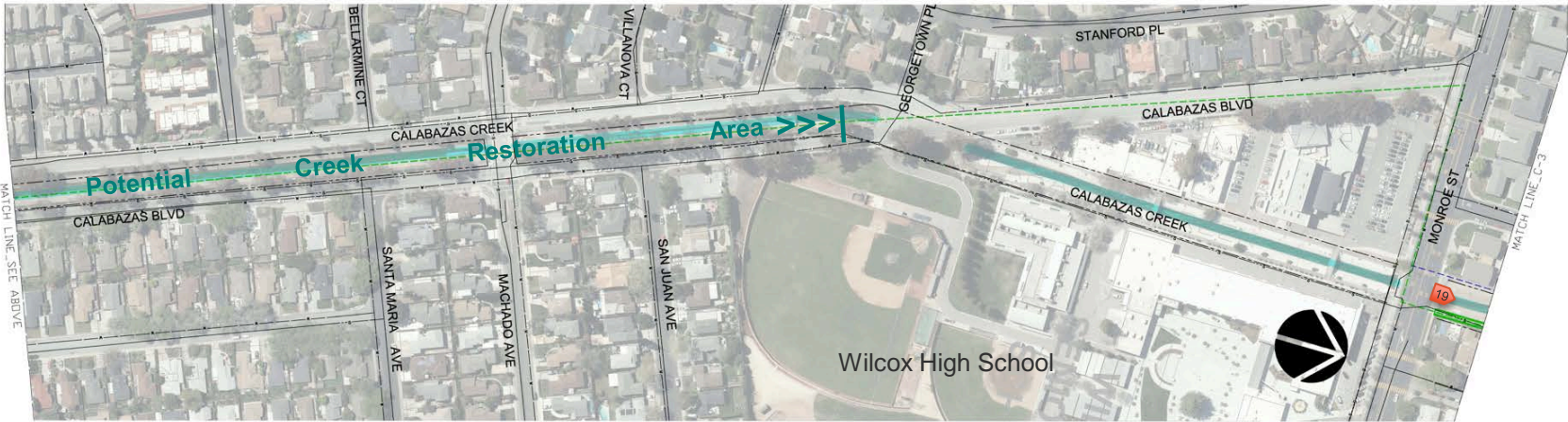


Possible ped/bike bridge location (above).

Connection to Benton at Curtis (right).



CALABAZAS CREEK - PRELIMINARY TRAIL ALIGNMENT PLAN



- LEGEND:**
- PROPOSED BIKE TRAIL
 - TUNNELS
 - UNDERPASSES AND RAMPS
 - OVERPASSES
 - PEDESTRIAN BRIDGES
 - EXIST. PEDESTRIAN BRIDGES
 - PHOTO LOCATION
 - RETAINING WALL
 - ALTERNATE TRAIL ALIGNMENT
 - Right of Way Limit
 - Creek

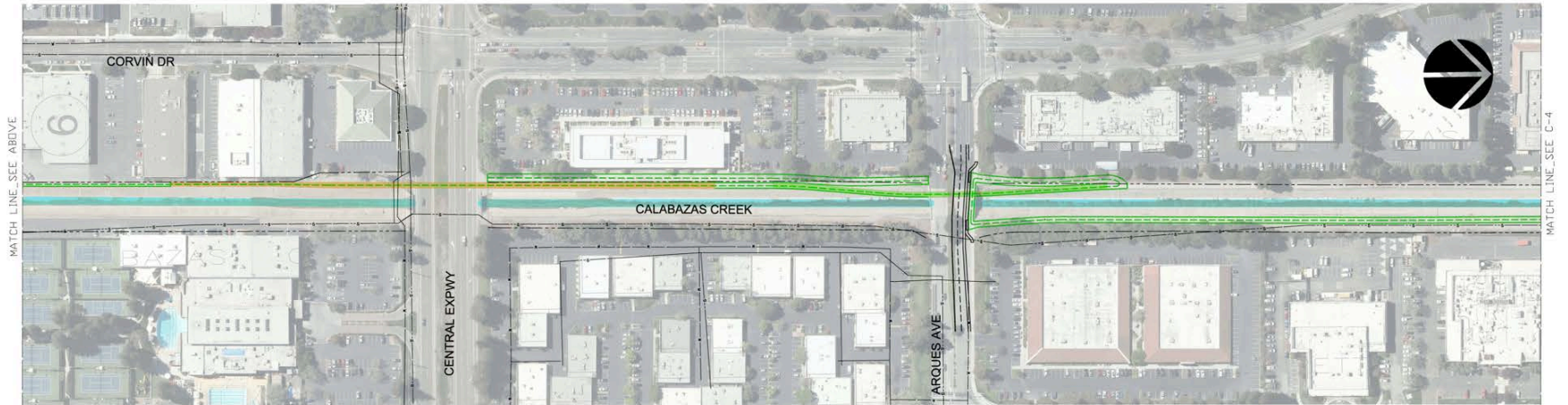


Potential opportunity for restoration of Calabazas Creek and development of a trail from Pomeroy to Georgetown



Warburton looking north toward Cabrillo.

CALABAZAS CREEK - PRELIMINARY TRAIL ALIGNMENT PLAN



- LEGEND:**
- █ PROPOSED BIKE TRAIL
 - █ TUNNELS
 - █ UNDERPASSES AND RAMPS
 - █ OVERPASSES
 - █ PEDESTRIAN BRIDGES
 - █ EXIST. PEDESTRIAN BRIDGES
 - P PHOTO LOCATION
 - - - RETAINING WALL
 - - - ALTERNATE TRAIL ALIGNMENT
 - - - Right of Way Limit
 - █ Creek



Caltrain/JPB/UPRR Crossing Location



Looking downstream at Monroe toward Agate ped/bike bridge and Caltrain/JPB/UPRR corridor.

Box culvert, Caltrain tracks and spur line tracks all pose engineering challenges.



CALABAZAS CREEK - PRELIMINARY TRAIL ALIGNMENT PLAN



- LEGEND:**
- PROPOSED BIKE TRAIL
 - TUNNELS
 - UNDERPASSES AND RAMPS
 - OVERPASSES
 - PEDESTRIAN BRIDGES
 - EXIST. PEDESTRIAN BRIDGES
 - # PHOTO LOCATION
 - RETAINING WALL
 - - - ALTERNATE TRAIL ALIGNMENT
 - - - Right of Way Limit
 - Creek





Possible Pedestrian Overcrossing (POC) to span Lakeside Drive, Highway 101 and Wildwood Avenue (Sunnyvale).

Right of Way (ROW) needed to integrate Calabazas Creek Trail with Mission College Blvd.



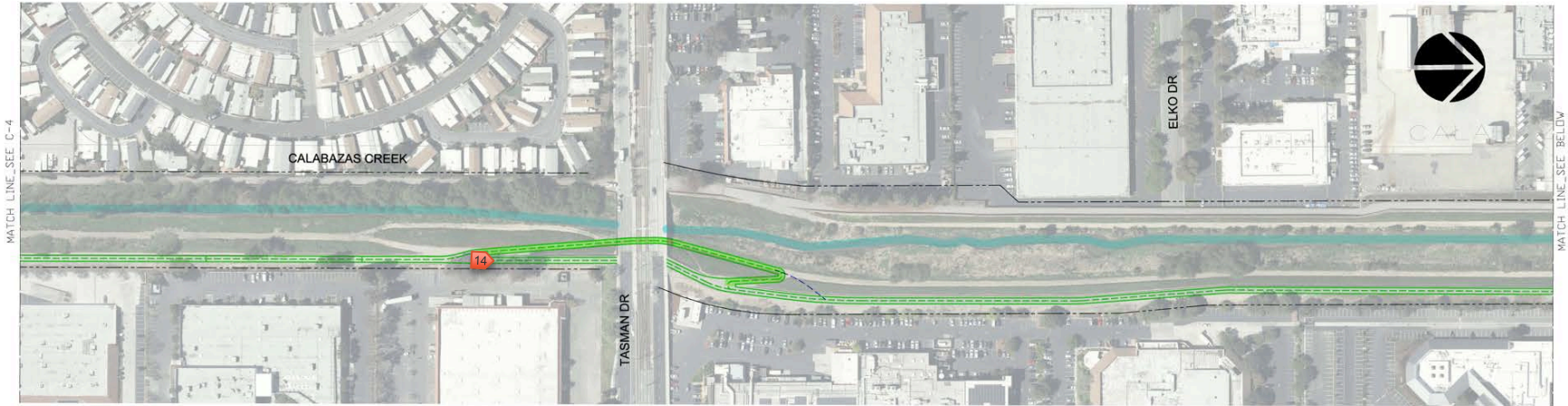
Trail descending levee at Mission College Blvd.














ROW is needed along the SCVWD flood wall to extend the trail to the Hwy 101 POC.



CALABAZAS CREEK - PRELIMINARY TRAIL ALIGNMENT PLAN



LEGEND:

-  PROPOSED BIKE TRAIL
-  TUNNELS
-  UNDERPASSES AND RAMP
-  OVERPASSES
-  PEDESTRIAN BRIDGES
-  EXIST. PEDESTRIAN BRIDGES
-  PHOTO LOCATION
-  RETAINING WALL
-  ALTERNATE TRAIL ALIGNMENT
-  Right of Way Limit
-  Creek



Highway 237 connection to San Francisco Bay Trail



Looking upstream (south) from the Bay Trail toward Highway 237.



Existing informal path beneath Highway 237 bridge.

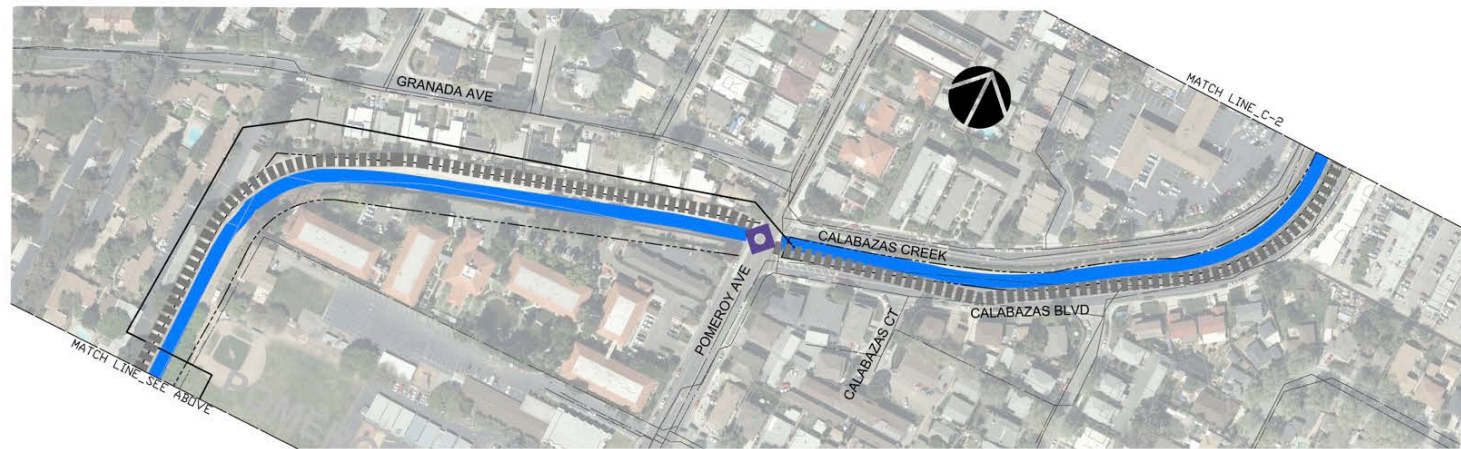
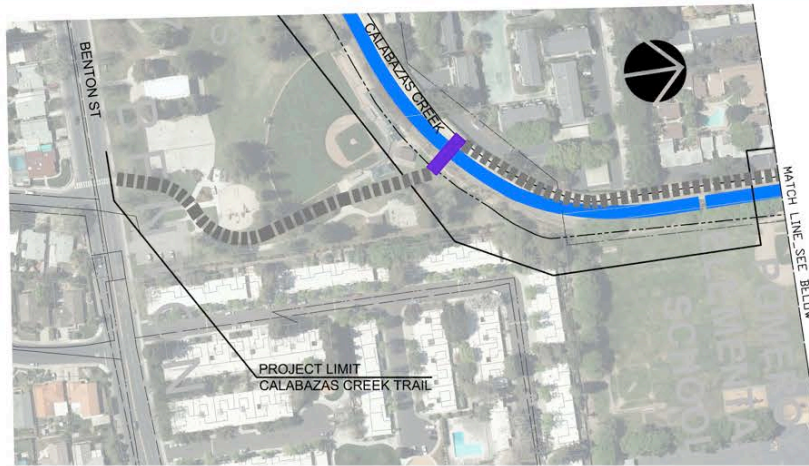


Questions/Comments





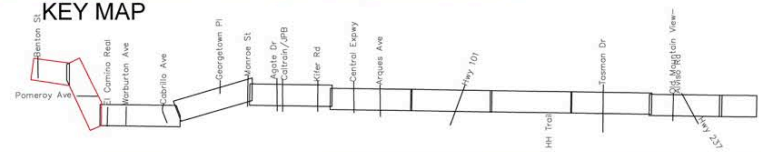
CALABAZAS CREEK - PRELIMINARY TRAIL ALIGNMENT PLAN



LEGEND

-  BIKE / PEDESTRIAN TRAIL
-  TUNNEL
-  UNDERPASS AND RAMP
-  OVERPASS
-  PEDESTRIAN BRIDGE
-  EXIST. PEDESTRIAN BRIDGE
-  AT GRADE CROSSING
-  RETAINING WALL
-  ALTERNATE TRAIL ALIGNMENT
-  RIGHT OF WAY LIMIT
-  CREEK


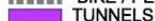
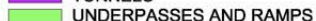





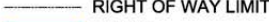

KEY MAP



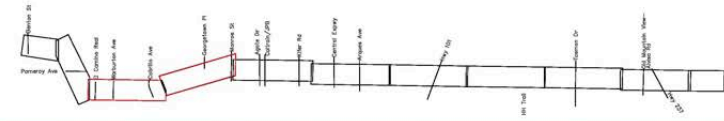
CALABAZAS CREEK - PRELIMINARY TRAIL ALIGNMENT PLAN



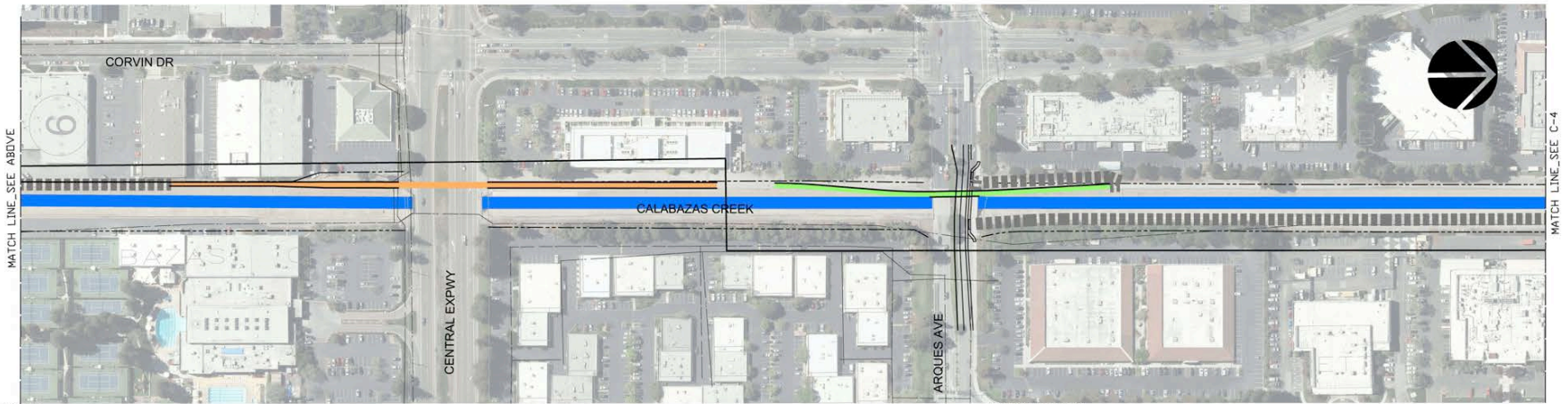
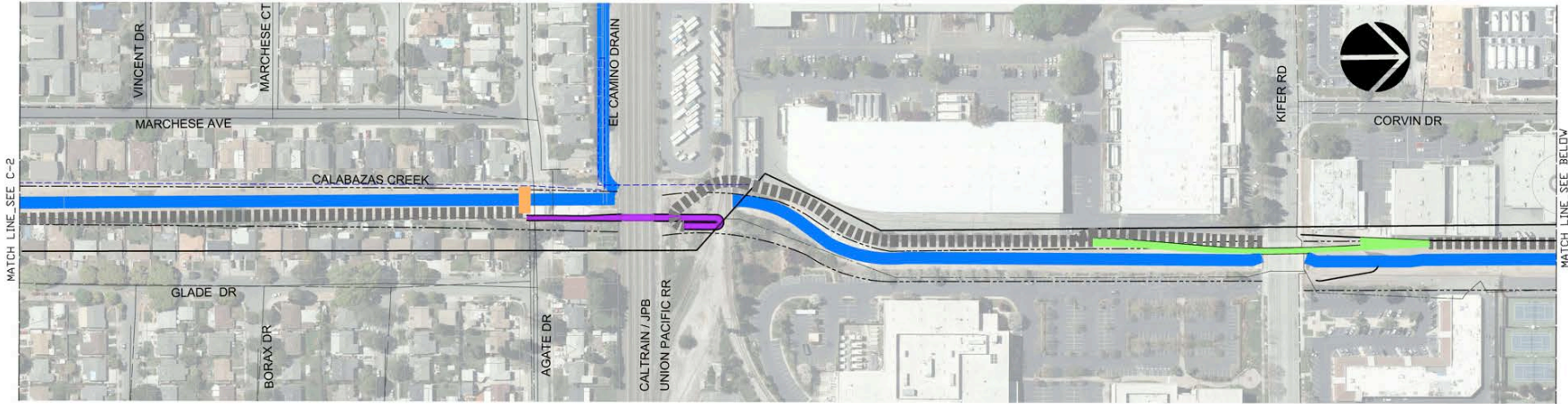
LEGEND

-  BIKE / PEDESTRIAN TRAIL
-  TUNNELS
-  UNDERPASSES AND RAMPS
-  OVERPASSES
-  PEDESTRIAN BRIDGES
-  EXIST. PEDESTRIAN BRIDGES
-  RETAINING WALL
-  ALTERNATE TRAIL ALIGNMENT
-  RIGHT OF WAY LIMIT
-  CREEK

KEY MAP



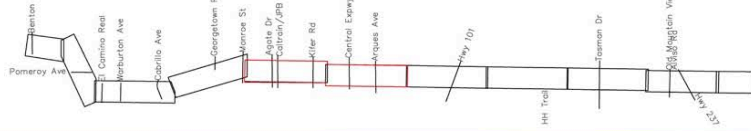
CALABAZAS CREEK - PRELIMINARY TRAIL ALIGNMENT PLAN



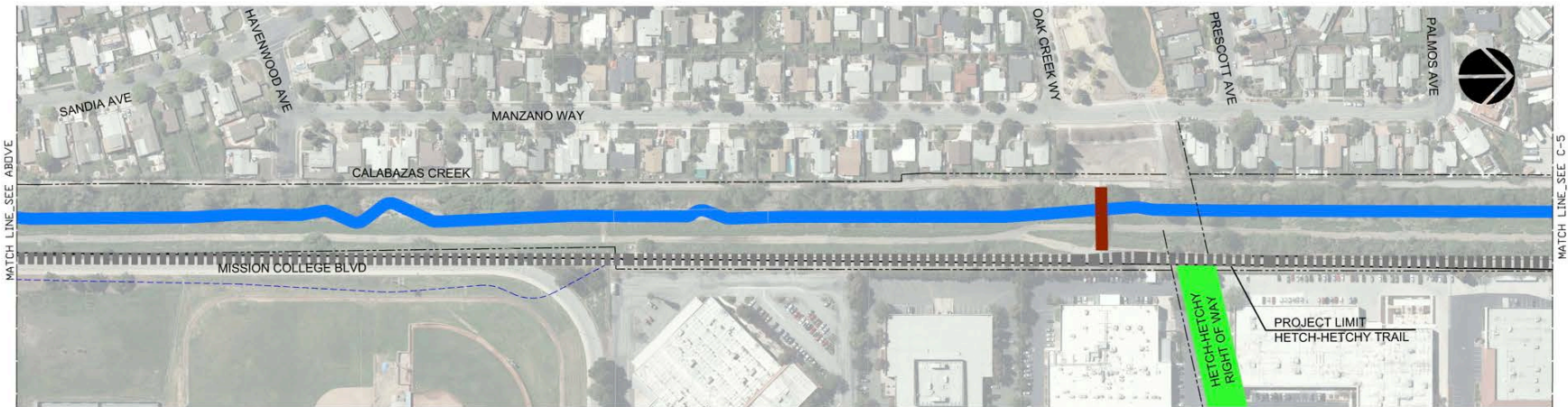
LEGEND

-  BIKE / PEDESTRIAN TRAIL
-  TUNNEL
-  UNDERPASS AND RAMP
-  OVERPASS
-  PEDESTRIAN BRIDGE
-  EXIST. PEDESTRIAN BRIDGES
-  AT GRADE CROSSING
-  RETAINING WALL
-  ALTERNATE TRAIL ALIGNMENT
-  RIGHT OF WAY LIMIT
-  CREEK

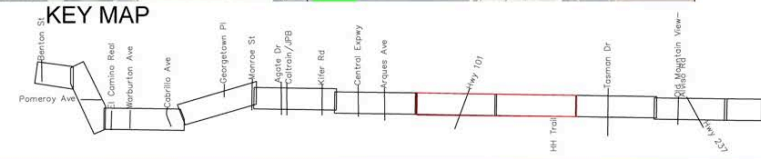
KEY MAP



CALABAZAS CREEK - PRELIMINARY TRAIL ALIGNMENT PLAN



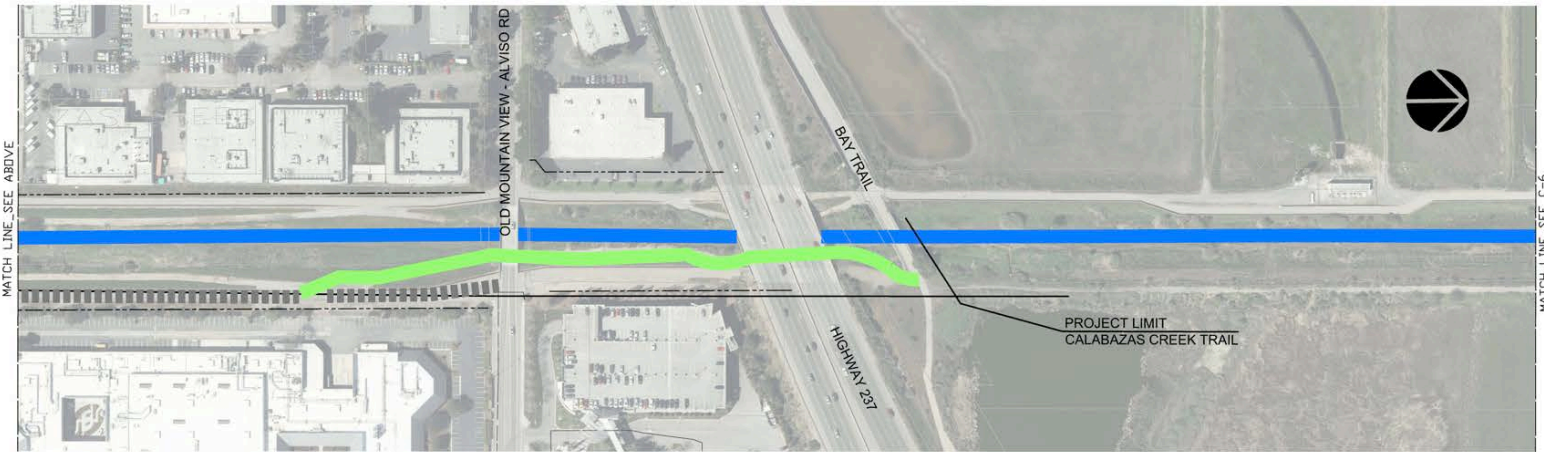
- LEGEND**
- BIKE / PEDESTRIAN TRAIL
 - TUNNEL
 - UNDERPASS AND RAMP
 - OVERPASS
 - PEDESTRIAN BRIDGE
 - EXIST. PEDESTRIAN BRIDGE
 - AT GRADE CROSSING
 - RETAINING WALL
 - ALTERNATE TRAIL ALIGNMENT
 - RIGHT OF WAY LIMIT
 - CREEK



**CITY OF SANTA CLARA
DEPARTMENT OF PUBLIC WORKS**

CREEK TRAIL NETWORK EXPANSION MASTER PLAN
PREPARED: SEPTEMBER 18, 2017

CALABAZAS CREEK - PRELIMINARY TRAIL ALIGNMENT PLAN



LEGEND

-  BIKE / PEDESTRIAN TRAIL
-  TUNNEL
-  UNDERPASS AND RAMP
-  OVERPASS
-  PEDESTRIAN BRIDGE
-  EXIST. PEDESTRIAN BRIDGE
-  AT GRADE CROSSING
-  RETAINING WALL
-  ALTERNATE TRAIL ALIGNMENT
-  RIGHT OF WAY LIMIT
-  CREEK

KEY MAP

