



**City of  
Santa Clara**  
The Center of What's Possible

# **Environmental Impact Report Scoping Meeting**

## **Patrick Henry Drive Specific Plan**



# Agenda

- Introductions and Welcome
- Explanation of the proposed project
- Overview of the Environmental Impact Report (EIR) process
- Preliminary scope of the EIR
- Public input on the scope of the EIR
- Adjournment



# Introduction and Welcome

## Meeting Purpose

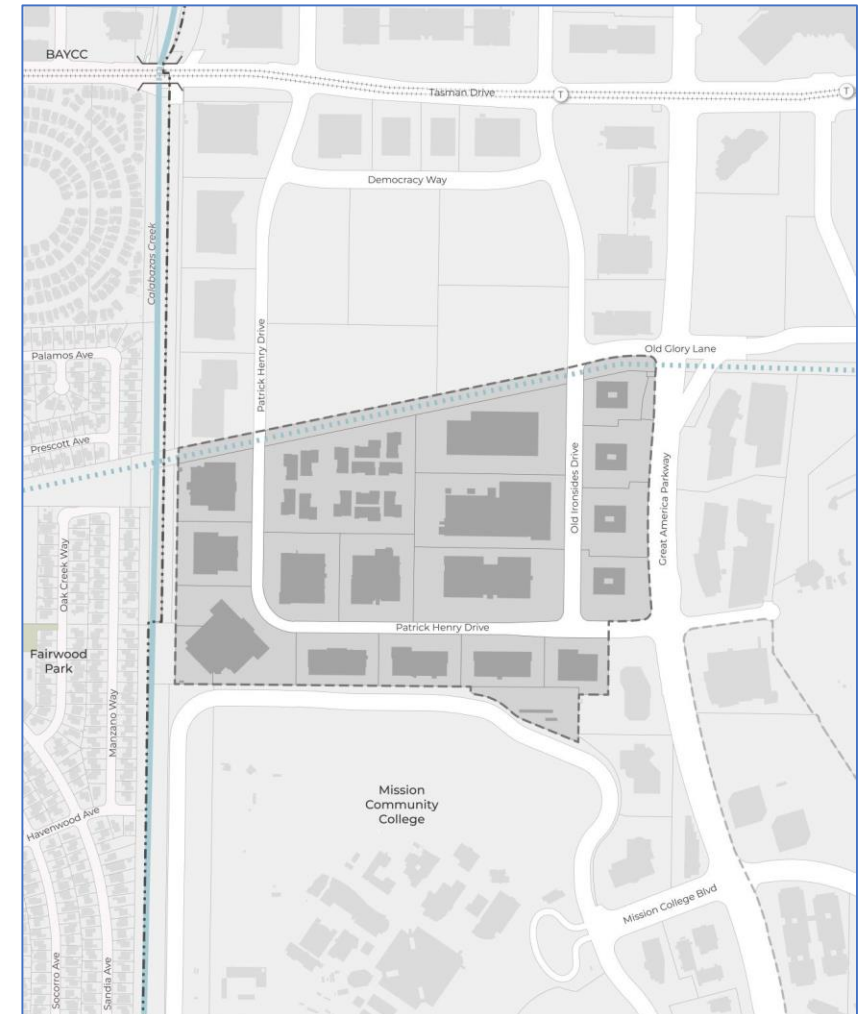
- To provide information on the EIR process
- To give you a brief overview of the project
- To get your input on the scope of the EIR
  - Topics to be analyzed in the EIR
  - Alternatives to be analyzed in the EIR



# Proposed Project

## Project Area

- 76 acre project site is bounded by Sunnyvale and Calabazas Creek to the west, the Hetch Hetchy right-of-way to the north, Great America Parkway to the east, and Mission College to the south



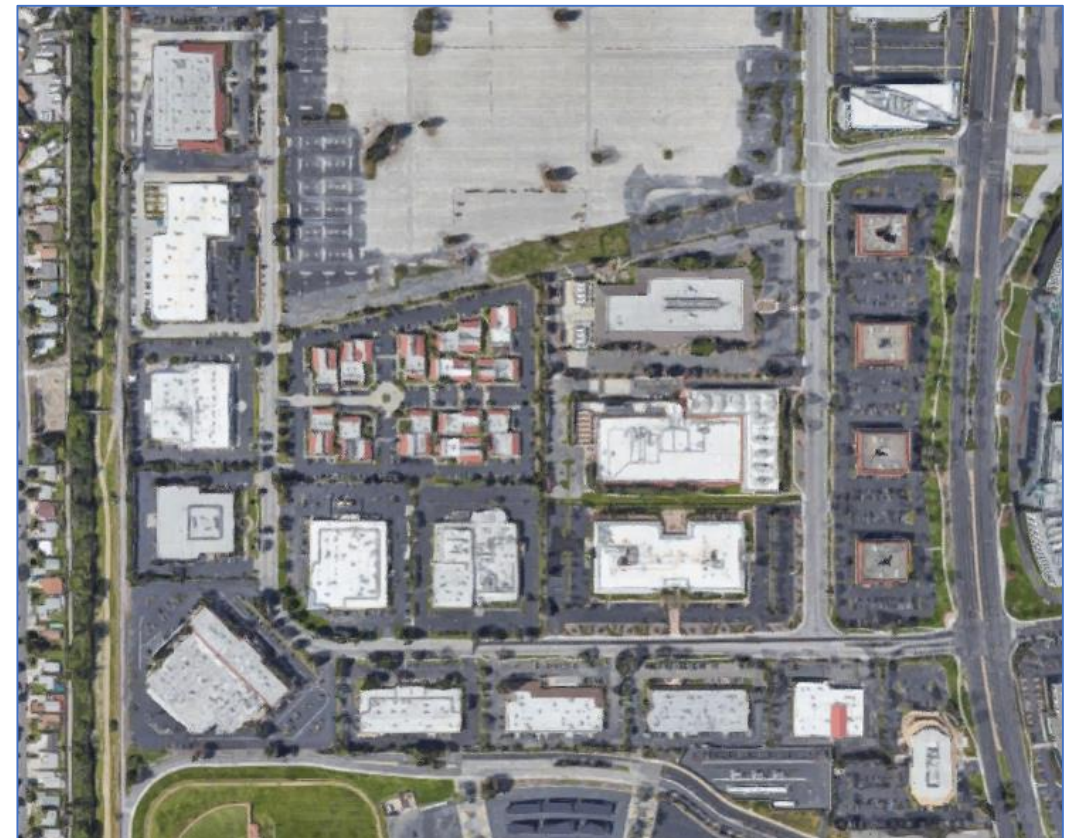




# Proposed Project

## Existing Conditions

- Employment-rich area of northern Santa Clara, comprising several moderate-intensity office and industrial parks accompanied by surface parking

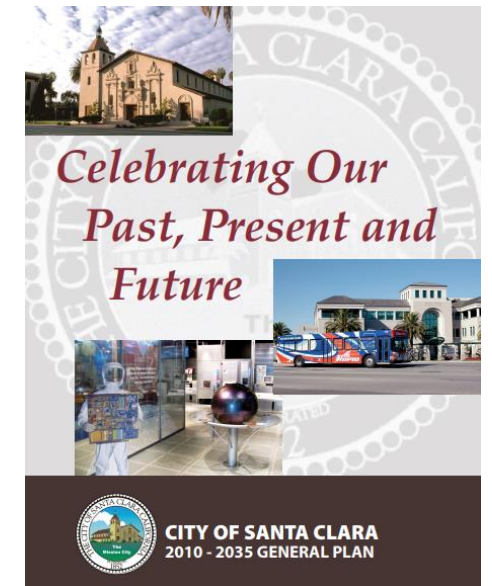




# Proposed Project

## Purpose of the Patrick Henry Drive Specific Plan

- Refine and implement the General Plan vision for the area.
- Create goals, policies, and design standards.
- Identify specific improvements and actions to achieve the vision.
- Address required specific plan topics such as land use, transportation, and infrastructure.



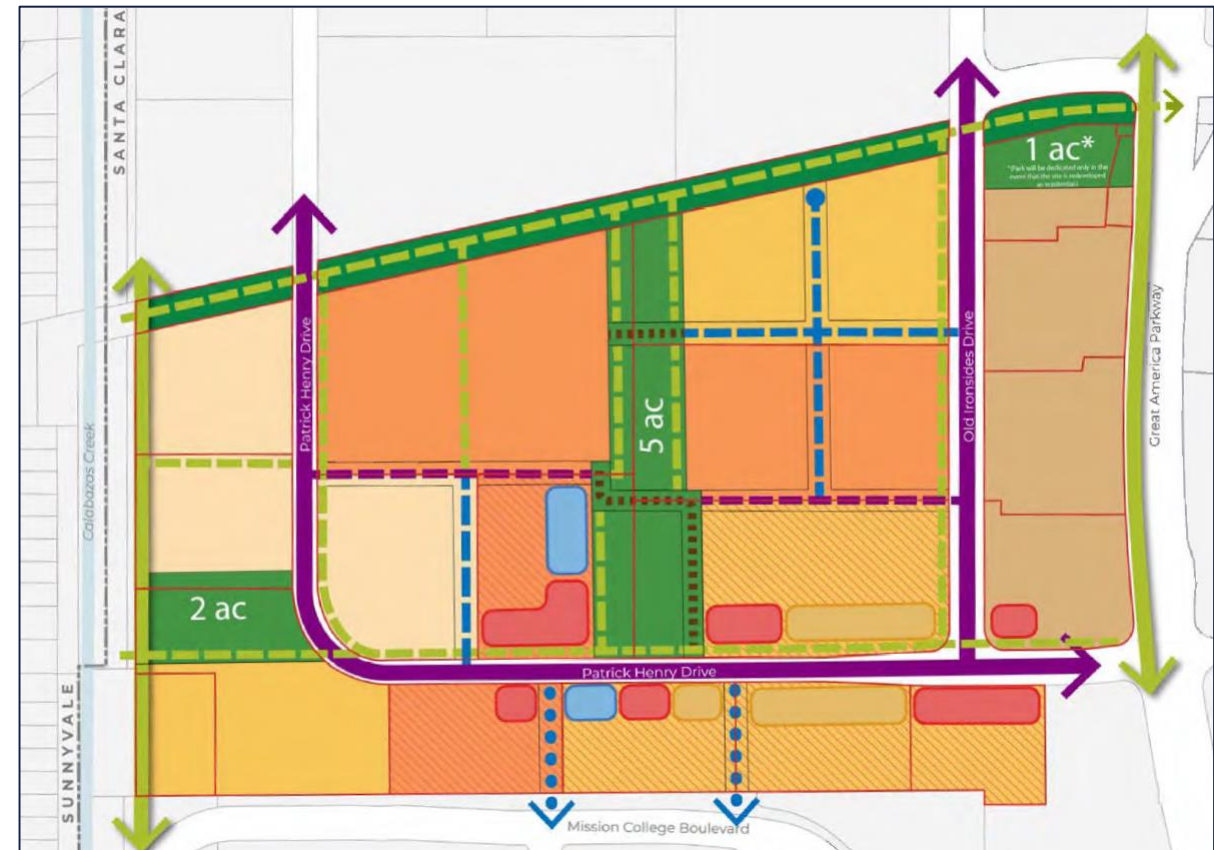




# Proposed Project

## Draft Land Use Plan

- Park/Open Space
- Hetch Hetchy ROW
- Very High Density Residential
- Urban Village Residential
- Urban Center Residential
- High Density Flex
- Urban Village Mixed-Use
- Urban Center Mixed-Use
- Retail
- Community / Civic
- Flex (Office, Retail)
- Existing Greenway
- Proposed Greenway
- Existing Roadway
- Proposed Roadway





# Proposed Project

## Draft Land Use Plan – Growth Assumptions

	Residential Units	Office	Other Non- Residential Uses
Scenario A	12,000	-	310,000 SF
Scenario B	10,300	785,000 SF	310,000 SF





# CEQA

## What is an Environmental Impact Report (EIR)?

- An informational document designed to inform the public and decision makers about potential environmental impacts of a project
- A problem-solving tool to avoid or less project impacts:
  - Mitigation measures
  - Alternatives
- Environmental impacts are just one of the factors decision makers consider



# CEQA

## Key Component of the EIR

- Executive Summary
- Project Description
- Environmental Impact Analysis
  - Existing Environmental Setting
  - Thresholds of Significance
  - Project Impacts
  - Cumulative Impacts
  - Mitigation Measures
  - Significance After Mitigation
- Alternatives





# CEQA

## Preliminary Scope of the EIR

- The EIR will be a program level document that analyzes the broad environmental effects of the project.
- The analysis will focus on the issues present in the project area and potentially impacted, including:

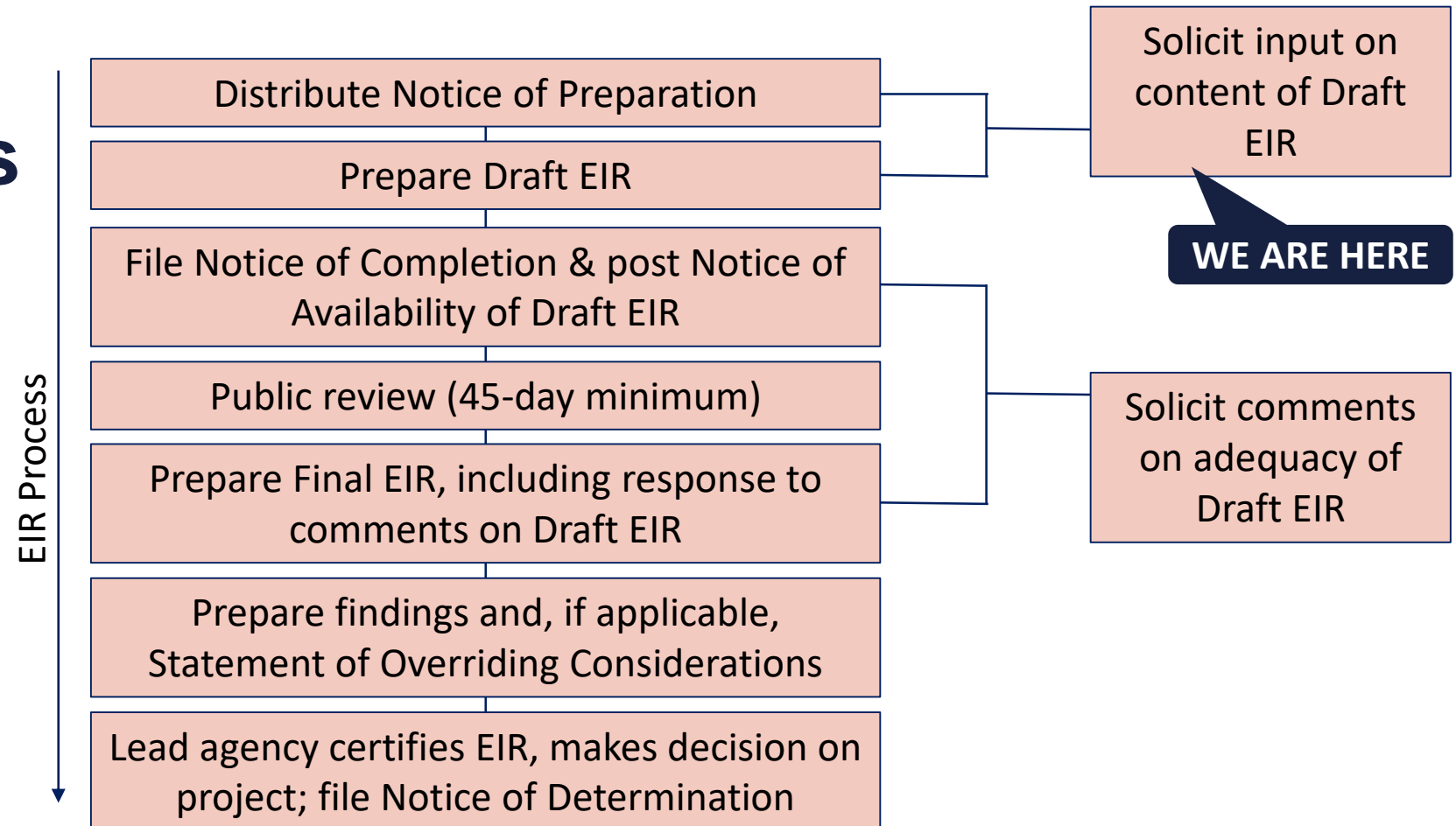
Aesthetics	Greenhouse Gas Emissions	Public Services
Air Quality	Hazards and Hazardous Materials	Recreation
Biological Resources	Hydrology and Water Quality	Transportation
Cultural Resources	Land Use and Planning	Tribal Cultural Resources
Energy	Noise	Utilities and Service Systems
Geology and Soils	Population and Housing	





# CEQA

## The EIR Process





# Next Steps

- Helping us with the scope of the EIR.
- Overall project timeline.



# Helping us with the EIR Scope

## Provide your comments on the scope of the EIR

- Environmental topics to be addressed
- Alternatives to be evaluated

**Please provide your comments by 5:00 PM on January 21, 2020**

**Comments can be emailed to [RBustos@SantaClaraCA.gov](mailto:RBustos@SantaClaraCA.gov), or mailed to:**

City of Santa Clara – Community Development Dept.

Attn: Rebecca Bustos

1500 Warburton Avenue

Santa Clara, California 95050





# Project Timeline

- December 2019 City Council review of NOP
- January 2020 Public Release of NOP & Scoping Meeting
- July-August 2020 Transportation Impact Analysis
- October 2020 Public Review Draft EIR
- January 2021 City Council review of Final EIR & Specific Plan