

City of Santa Clara

CLIMATE ACTION PLAN

COMMUNITY WORKSHOP | July 16, 2020



Welcome!

Zoom Guidelines



- Project Team will:
 - Facilitate and present throughout the meeting
 - Guide breakout room discussions
 - Take notes and summarize the discussion
 - Help participants navigate the software to fully participate
- Participants will:
 - Share ideas and respond to questions
 - Mute/unmute for themselves to minimize background noise and participate in the discussion
 - “Raise” or “Lower” Hand in the participant window as needed
 - Type in the chat window as needed
 - Message the facilitator directly as needed



Meeting Objectives

- Describe the Climate Action Plan update process
- Provide a brief overview of the City's 2016 emissions profile and forecast
- Summarize community engagement to date
- Collect input about:
 - Climate issues that are important to the community
 - Prioritizing the proposed climate action strategies
- Engage the public in an open and transparent way about the Climate Action Plan Update



Agenda

- 5:30-5:40 Welcome + Introductions
- 5:40-5:55 CAP Overview
- 5:55-6:20 Sectors, Strategies, and Measures
- 6:20-6:55 Breakout Rooms (25 min) + Report Back (10 min)
- Buildings and Energy
 - Community Resilience and Wellbeing
 - Materials + Consumption
 - Natural Systems + Water Resources
 - Transportation + Land Use
- 6:55-7pm Conclusion + Next Steps



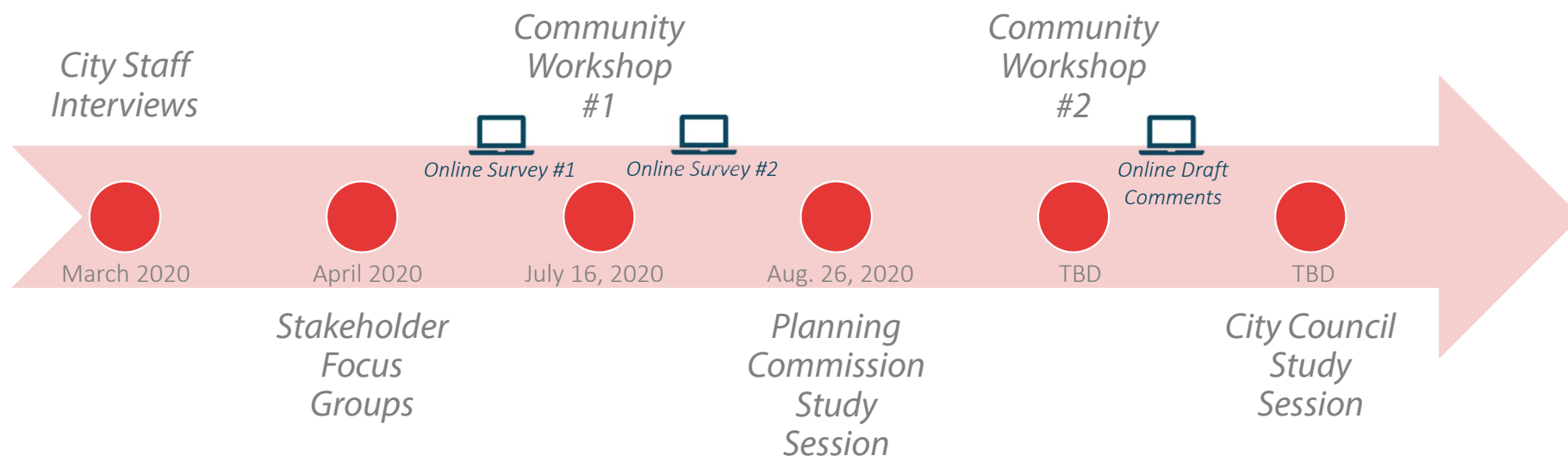
Climate Action Plan Update Overview

A Climate Action Plan:

- Creates a path for reducing the community's greenhouse gas emissions and increase resiliency across multiple sectors
- Encompasses the entire community & reflects its values
- Leverages existing plans/programs
- Ranks opportunities & priorities
- Maximizes cost-benefit



Community Engagement Process



Community Engagement to Date

- City staff interviews
 - Water and Sewer
 - Streets
 - Traffic
 - Public Works
 - Community Development
 - SVP
- Online Survey #1
 - 348 responses
- Stakeholder Focus Groups
 - Business Interests
 - Data Centers
 - Youth Commission + Santa Clara University
 - Santa Clara Youth Climate Action Team
 - ABAG
 - Transportation + Mobility Advocates
 - SVP



Community Engagement Findings

Common Themes

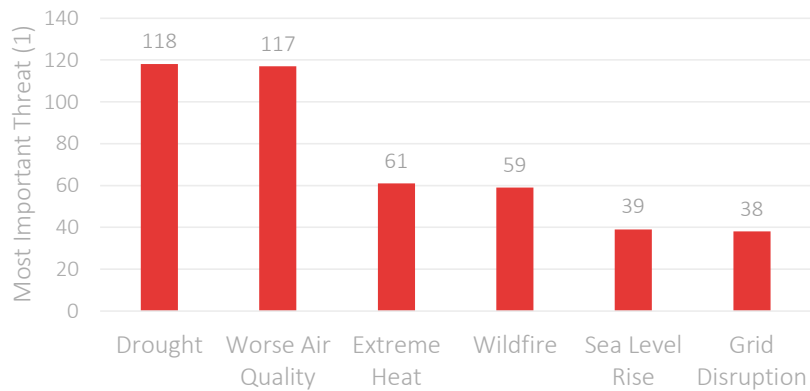
- GHG reduction targets should be aligned with peer cities and State regulations
- Near-term targets should set the City up to achieve long-term targets
- The City should consider sector-specific targets and per capita GHG targets
- Current lack of knowledge about City's climate action and GHG reduction efforts
- Imbalance between jobs and housing units— by 2040 the jobs to housing ratio will be almost 3:1 – exacerbates GHG emissions related to transportation.
- Bicycle safety is a concern and facilities are not on par with other adjacent cities
- Data centers and tech companies have their own climate goals – SVP will need to be able to meet the demand for renewable energy as part of business retention
- Climate related threats include sea level rise, lack of awareness, lack of city/regional coordination, and political will



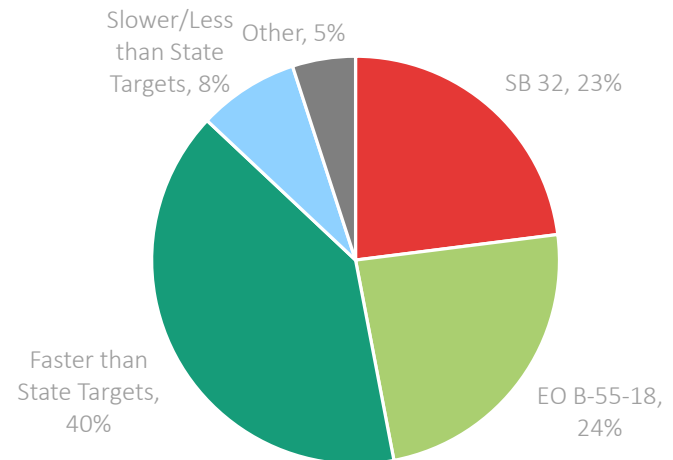
Community Engagement Findings

Survey Results

Climate Threats



Preferred Emissions Target

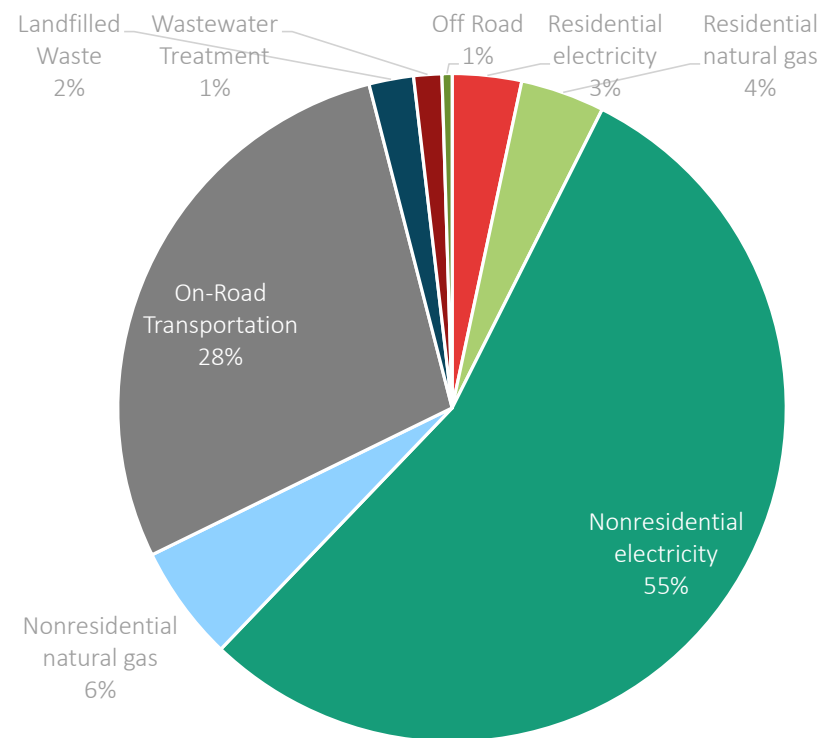


- **Suggested strategies:**
 - renewable energy (solar)
 - trees and green spaces
 - mixed-use zones
 - transportation electrification
 - complete bike and ped network
- **Responsibility for action:** Federal government, residents, and State government
- **Barriers to climate action:**
 - lack of public education/awareness
 - skeptics
 - population growth/development
 - cost of climate action
 - lack of political will/city leadership
 - car culture



2016 Greenhouse Gas Emissions Profile

Sector	GHG Emissions (MTCO ₂ e)
Nonresidential Electricity	980,317
Nonresidential Natural Gas	99,945
Mobility + Transportation	505,989
Residential Electricity	60,132
Residential Natural Gas	72,780
Solid Waste	25,724
Water + Wastewater	24,292
Off-Road Equipment	8,634
TOTAL	1,790,833



GHG Emissions Forecast 2040

Santa Clara Growth Projections

↑ 28%
Population

↑ 172%
Jobs

↑ 25%
Housing Units

↑ 76%
Service
Population

Santa Clara Emissions Projections

↑ 126%

Business-as-Usual
(BAU) Forecast

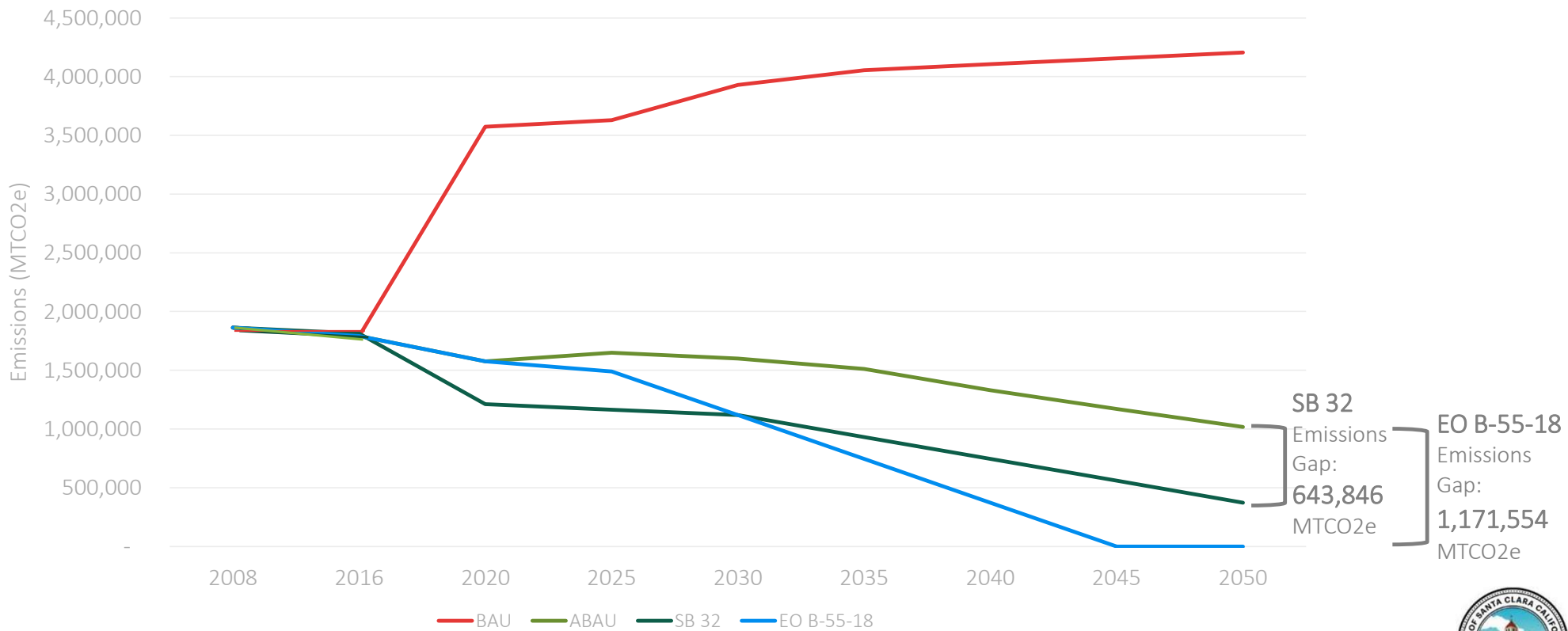
↓ -45%

Adjusted Business-as-Usual
(ABAU) Forecast



GHG Reduction Targets

Santa Clara GHG Emissions 2008-2050



Strategies + Actions by Sector

Climate Action Sectors

- Buildings + Energy
- Transportation + Land Use
- Materials + Consumption
- Natural Systems + Water Resources
- Community Resilience + Wellbeing



Action Development



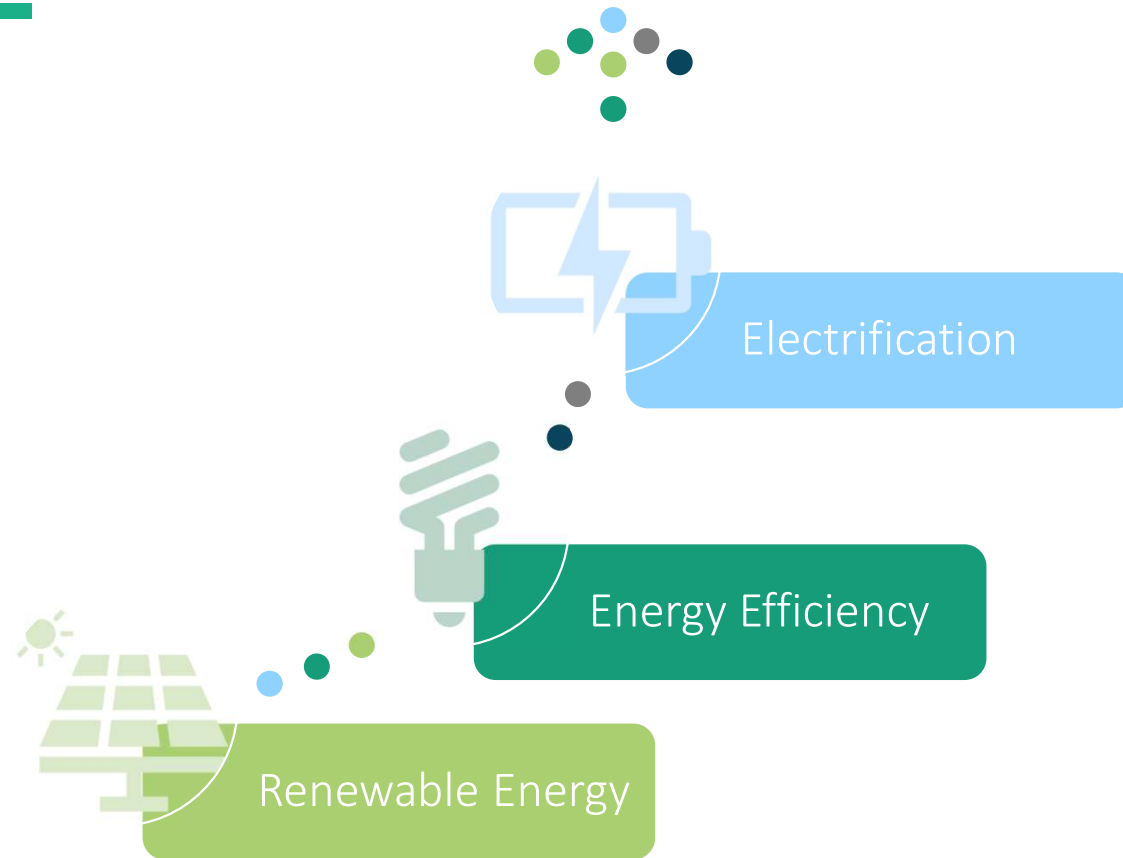
Evaluation Criteria

Criterion

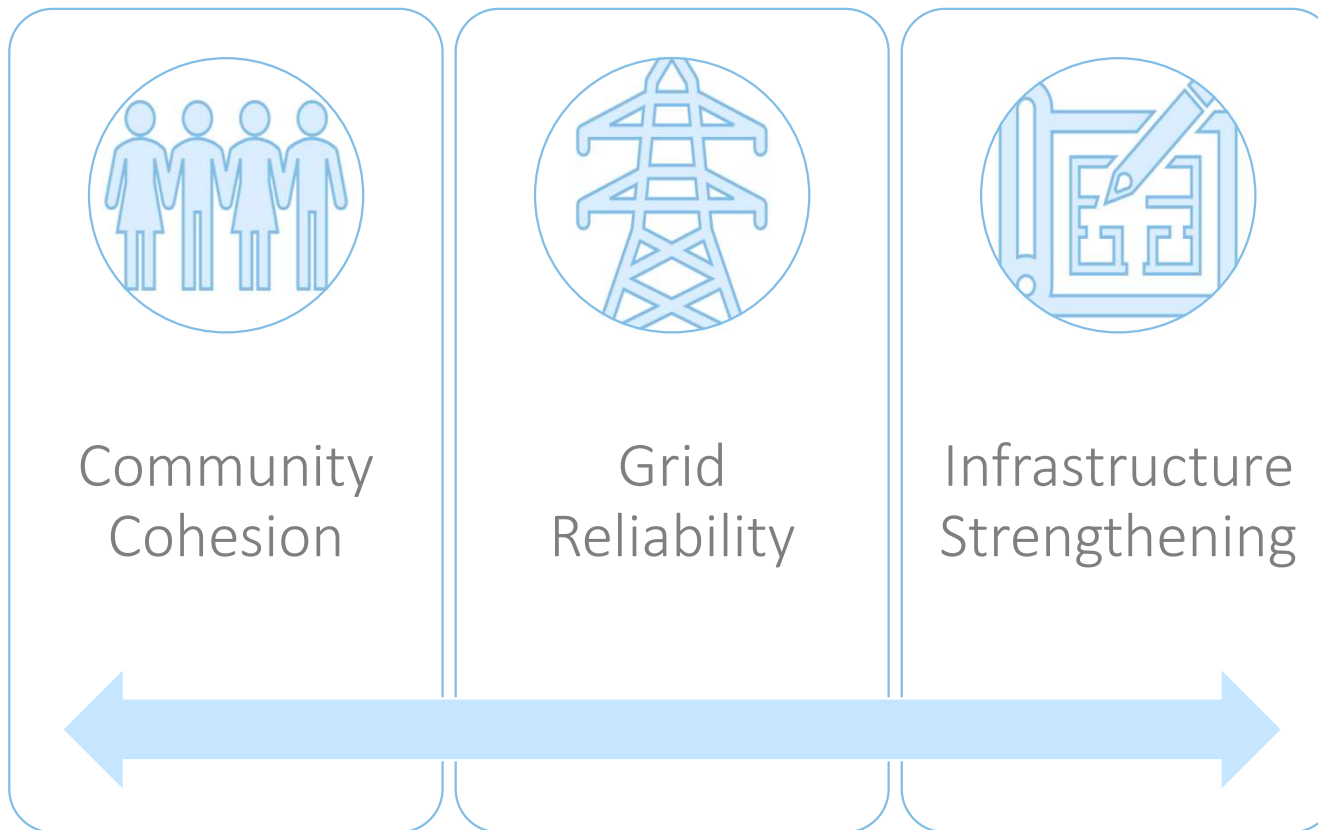
- Impact
- Cost to City
- Feasibility
- Community support and cost
- Equity
- Co-benefits or synergies



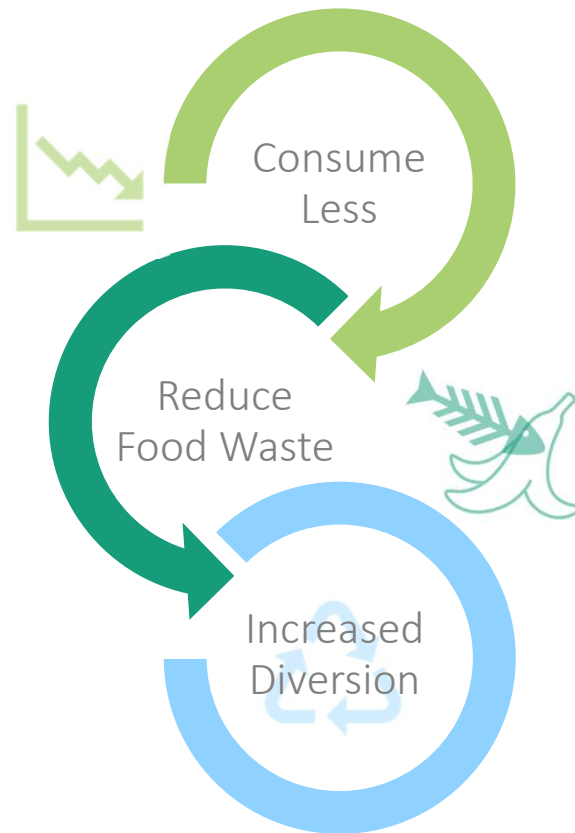
Buildings + Energy



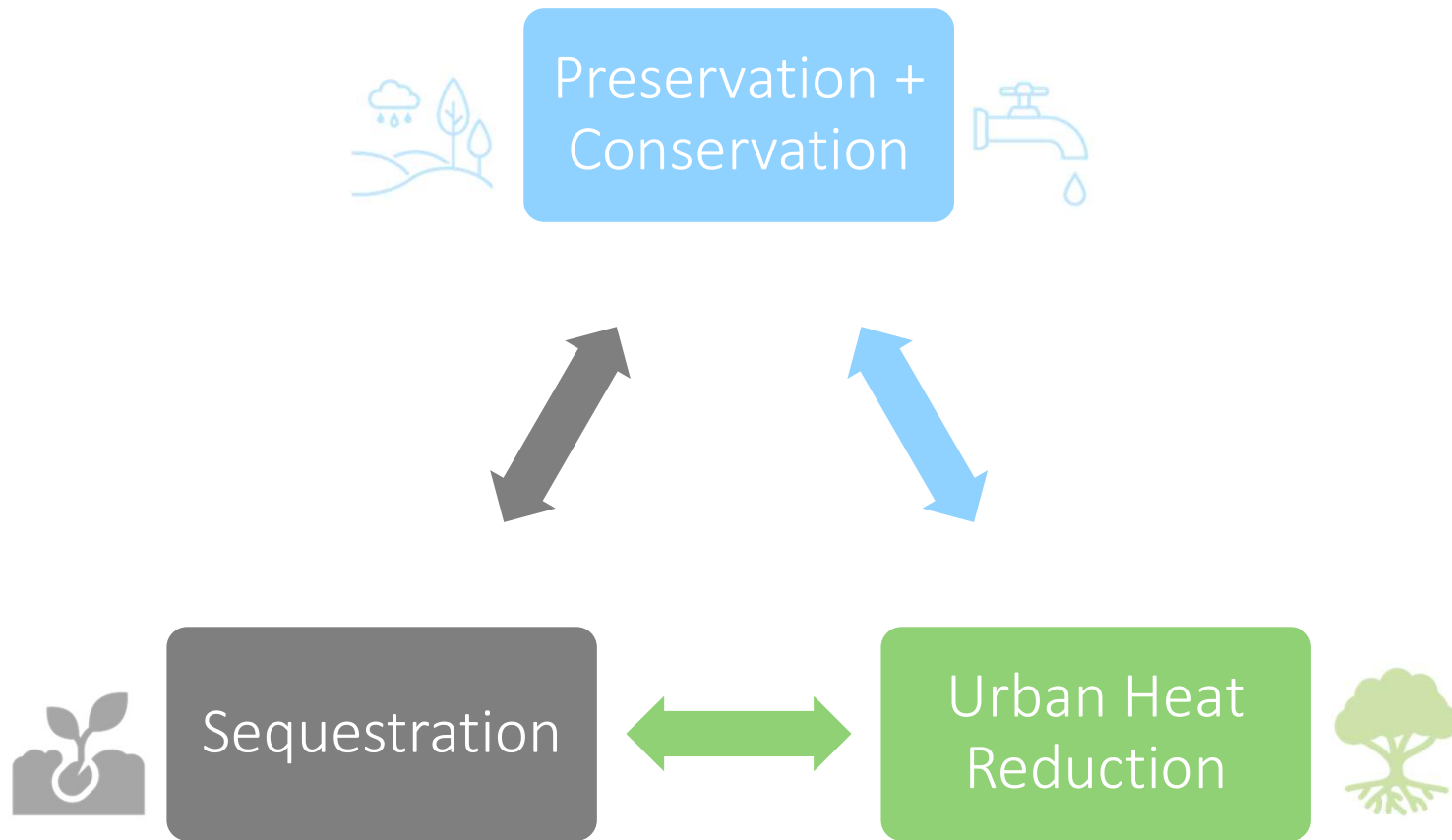
Community Resilience + Wellbeing



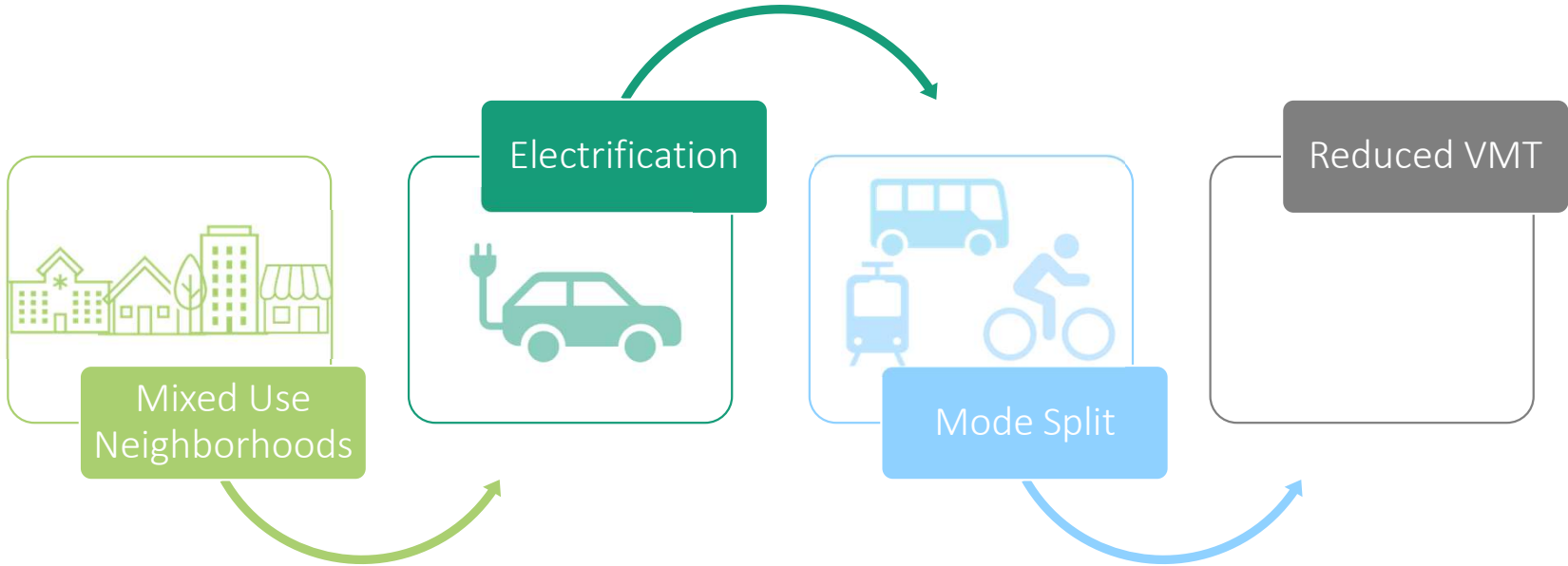
Materials + Consumption



Natural Systems + Water Resources



Transportation + Land Use



Breakout Rooms + Report Back

Next Steps

Next Steps

- Public Input
 - Online survey #2 – August
 - Online draft + workshop – TBD
- Action Evaluation and Prioritization
 - Multi-criteria analysis (GHG reductions, cost, feasibility)
 - Action shortlist
- Planning Commission Review – August 26th
- City Council Review – TBD



Thank you!

Questions?

Andrea Martin

Cascadia Consulting Group

andream@cascadiaconsulting.com

Walker Wells

Raimi + Associates

walker@raimiassociates.com

Nimisha Agrawal, Associate Planner

City of Santa Clara

nagrawal@santaclaraca.org