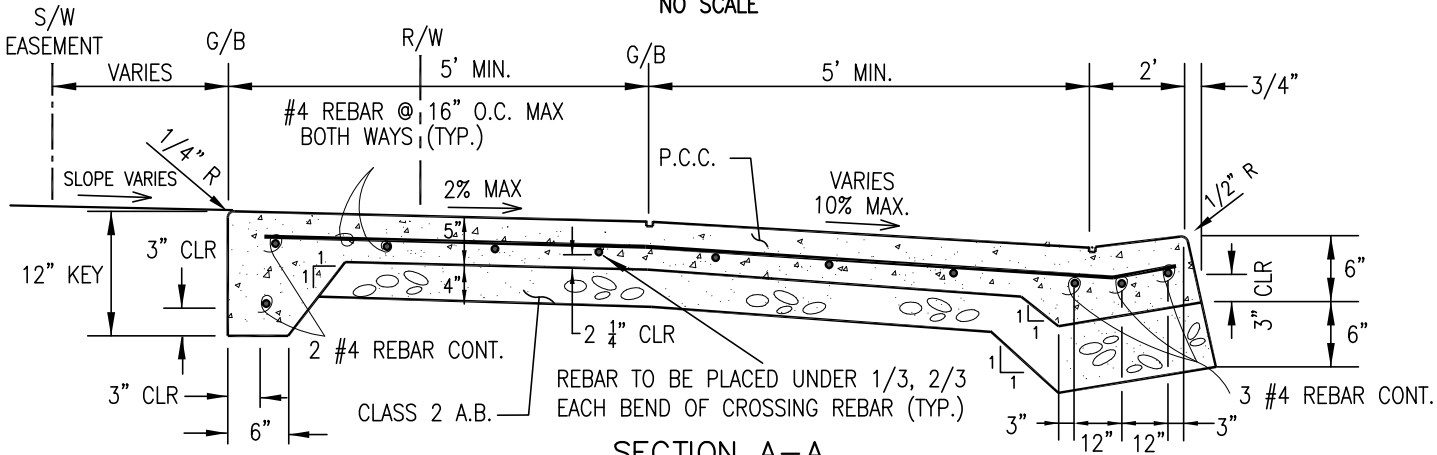
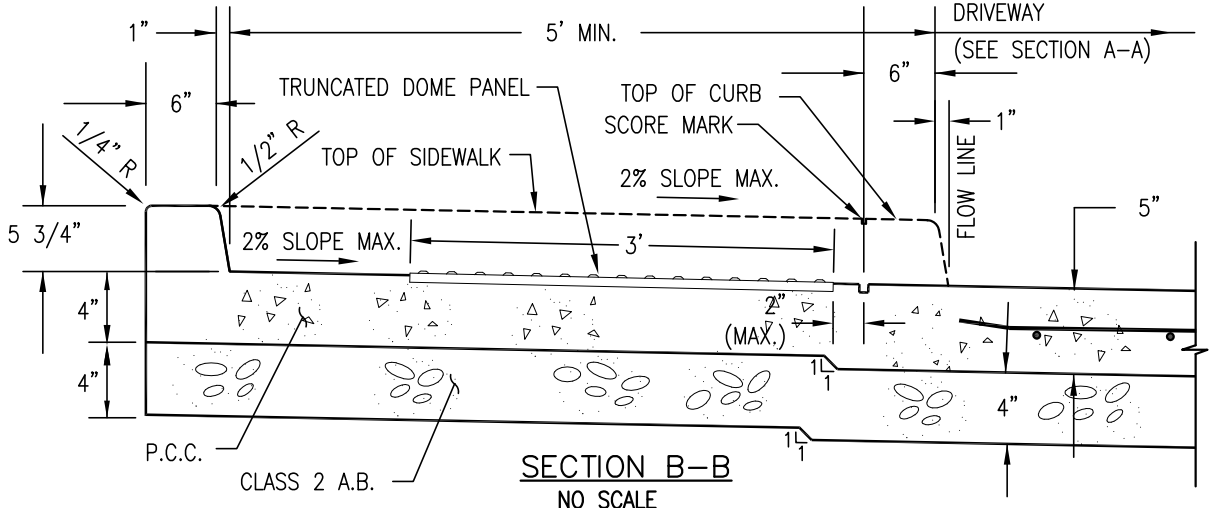


PLAN VIEW
NO SCALE

SEE NOTE 4



SECTION A-A
NO SCALE



SECTION B-B
NO SCALE

- NOTES:**
1. USE OF CURB-RETURN DRIVEWAY ALLOWED ONLY WITH WRITTEN APPROVAL OF CITY ENGINEER.
 2. SEE DETAIL ST-8 FOR D/W WIDTH, JOINTS, AND SCORE MARKS. JOINTS/SCORE MARKS PATTERNS SHALL CONTINUE TO THE AREA OUTSIDE OF D/W WIDTH.
 3. SEE DETAIL ST-14 FOR CURB RAMP CONSTRUCTION AND NOTES.
 4. 18" WIDE BAND OF PAVEMENT SHALL BE REMOVED AND REPLACED. SEE NOTE 5 OF GENERAL NOTES (APPENDIX) FOR REQUIREMENTS.



DRAWN BY: K. TRAN
 CHECKED BY: V. LUCHESSI
 APPROVED BY: F. AMIN
 DATE: SEPTEMBER 2020

CURB-RETURN DRIVEWAY
 CITY OF SANTA CLARA

ST-10
 PAGE: 10