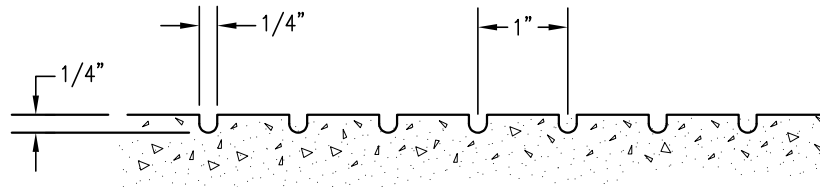


NOTES:

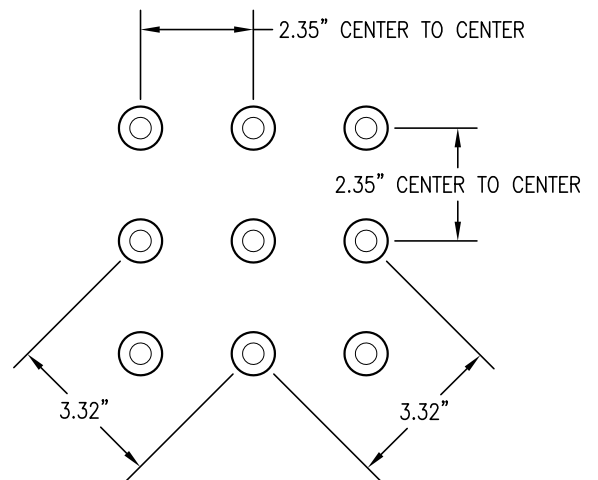
1. THE CURB RAMP SHALL HAVE A 12" WIDE BORDER WITH 1/4" GROOVES APPROXIMATELY 1" O.C. SEE BORDER GROOVING DETAIL.



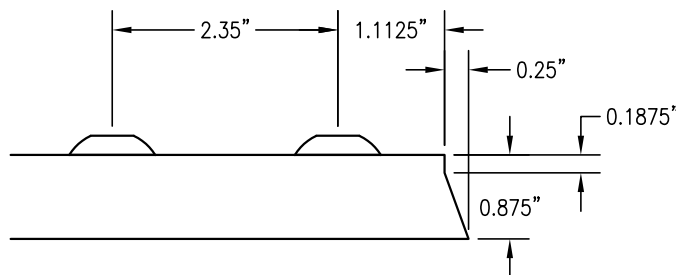
BORDER GROOVING DETAIL

NOTES:

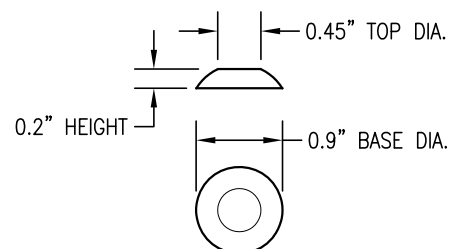
1. THE DETECTABLE WARNING SURFACE SHALL CONSIST OF RAISED TRUNCATED DOMES EXTENDING THE FULL WIDTH OF AND 3'-0" DEPTH OF THE CURB RAMP LANDING.
2. THE RAISED TRUNCATED DOME PANELS SHALL BE CENTERED AND SQUARED ON THE CURB RAMP.
3. THE RAISED TRUNCATED DOME PANELS SHALL BE CONCRETE TekWay MANUFACTURED BY StrongGo INDUSTRIES, OR APPROVED EQUAL.
4. THE COLOR OF THE RAISED TRUNCATED DOMES SHALL BE "SAFETY YELLOW".
5. THE EDGE OF THE RAISED TRUNCATED DOME PANEL NEAREST THE STREET SHALL BE BETWEEN 6" AND 8" FROM THE GUTTER FLOWLINE.
6. ALL TRUNCATED DOME DIMENSIONS HEREIN ARE NOMINAL.



RAISED TRUNCATED DOME PATTERN (IN-LINE)



TRUNCATED DOME PANEL WEDGE DETAIL



RAISED TRUNCATED DOME



DRAWN BY:	K. TRAN
CHECKED BY:	V. LUCHESSI
APPROVED BY:	F. AMIN
DATE:	SEPTEMBER 2020

**CURB RAMP GROOVING AND TRUNCATED DOME DETAILS**

CITY OF SANTA CLARA

**ST-16**

PAGE: 16