



Pruneridge Avenue Complete Streets Plan

Community Workshop

**Thursday July 22, 2021 and
Saturday July 24, 2021**



Welcome

- **Thank you for being here!**
- Can't stay the whole time? Connect with us via:
 - **Web: SantaClaraCa.gov/PruneridgeAvePlan**
 - **Voicemail: (408) 320-7060**
 - **Email: PruneridgeAvePlan@AltaGO.com**



Workshop Agenda

1. Introductions
2. Zoom meeting and PollEverywhere tutorial
- 3. Question and Answers Session 1**
4. Project Overview and Updates
5. Corridor Design Concepts and Pedestrian Intersection Improvements
- 6. Question and Answer Session 2**
7. Next Steps



Introductions

- **City of Santa Clara Staff**
 - Michael Liw, Assistant Public Works Director
 - Jonathan Yee, Transportation Manager
 - Carol Shariat, Project Manager
- **Alta Planning + Design**
 - Jeff Knowles, Principal Planner
 - Ryan Booth, Design Associate
 - Ben Frazier, Senior Planner



Schedule





Other ways to stay involved

1. WEB: SantaClaraCa.gov/PruneridgeAvePlan
2. VOICEMAIL: (408) 320-7060
3. EMAIL: PruneridgeAvePlan@AltaGO.com



How to use Zoom

There are multiple ways to interact with us through Zoom:

Type questions and comments in the Q&A window.

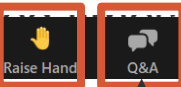
Raise your hand to speak during Q&A Sessions.



How to use Zoom

This meeting will be recorded and posted online.

Raise Hand in the webinar if you want to ask a question.



Question and Answer Open panel to ask question. Hosts will answer verbally or in the panel at scheduled times throughout the meeting.



PollEverywhere

PollEv.com/altaplanning107

Keep the page open – we will be turning on new polls throughout the presentation!

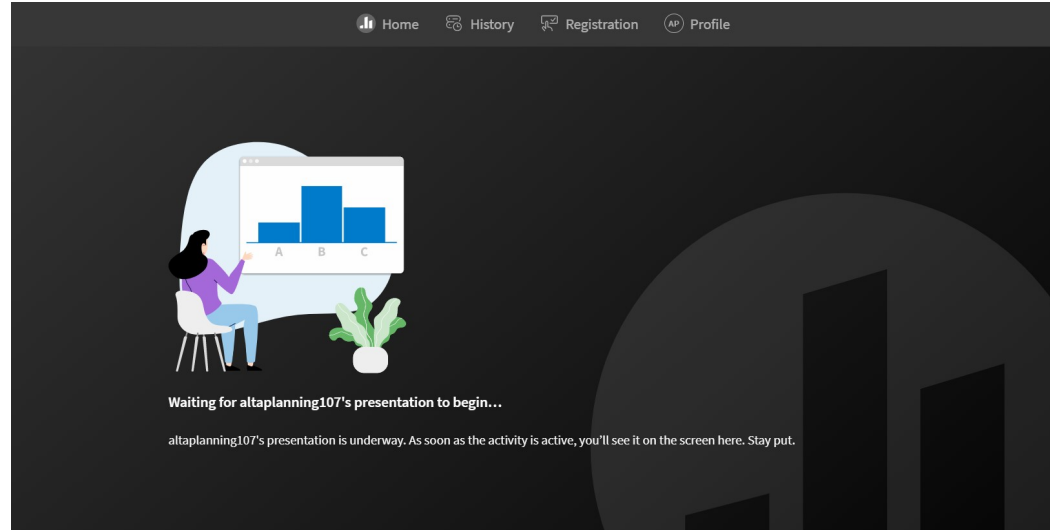
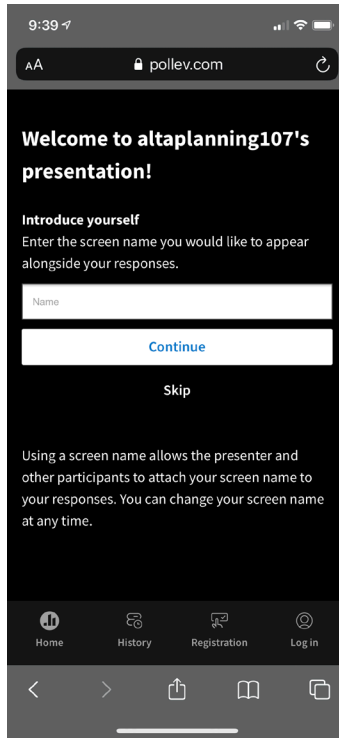
Alternatively:

Use your cell phone to text the word **ALTAPLANNING107** to **22333**





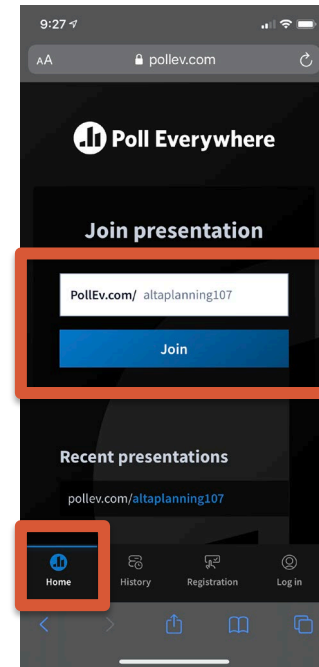
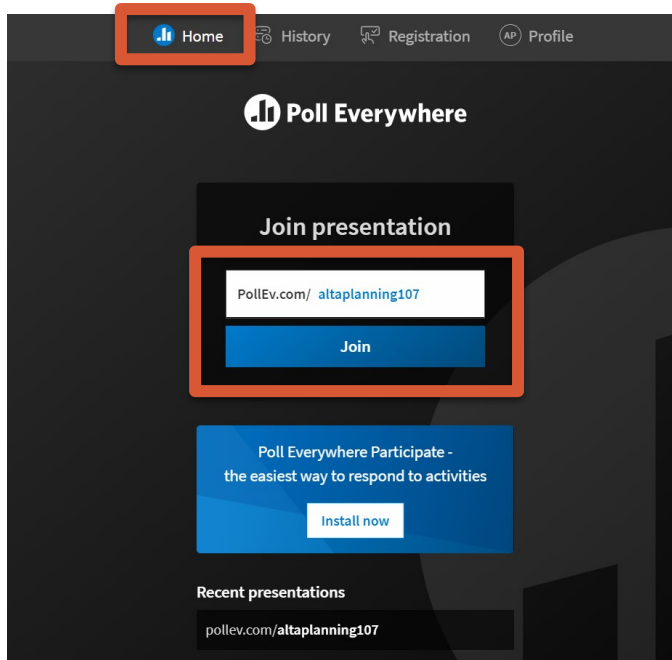
How to access PollEverywhere





How to access PollEverywhere

PollEv.com/altaplanning107





PollEverywhere Test

Are you able to access PollEverywhere?

Yes



Poll 1

When poll is active, respond at pollev.com/altaplanning107

Text **ALTAPLANNING107** to **22333** once to join

Where do you live?

On or within a few
blocks of Pruneridge

Different area
within Santa Clara

Neighboring city

Somewhere else



Poll 2

When poll is active, respond at pollev.com/altaplanning107

Text **ALTAPLANNING107** to **22333** once to join

How did you hear about tonight's meeting?

Received a postcard

City of Santa Clara website

City of Santa Clara social media

City of Santa Clara email

Other method



Question and Answer Session 1

- Questions on Zoom or PollEverywhere?

Project Overview and Updates



Pruneridge Avenue and Westridge Drive



**City of
Santa Clara**
The Center of What's Possible



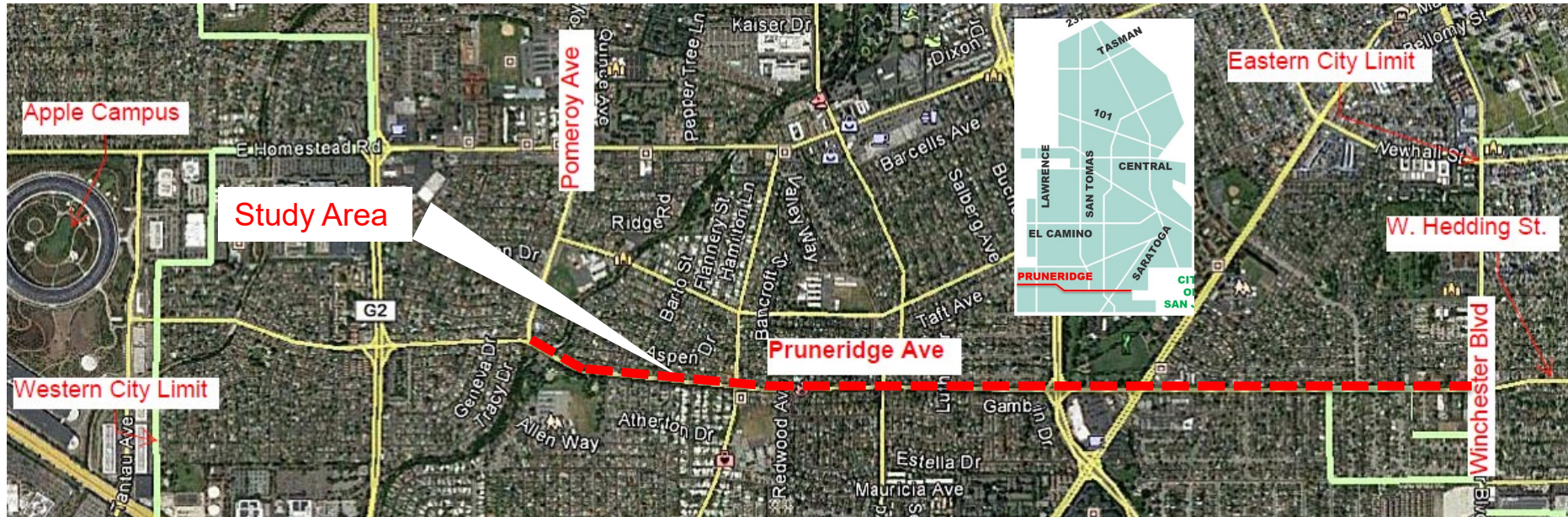
Why study Pruneridge?

- Included in the City's General Plan and a high priority corridor in both City and County Bicycle Plans
- Implement the City's Complete Streets Policy 18-8593
 - <https://bit.ly/3bfkWO3>
- Help achieve the goals of the City's Climate Action Plan
- Enhance safety and comfort for all





Project Study Area

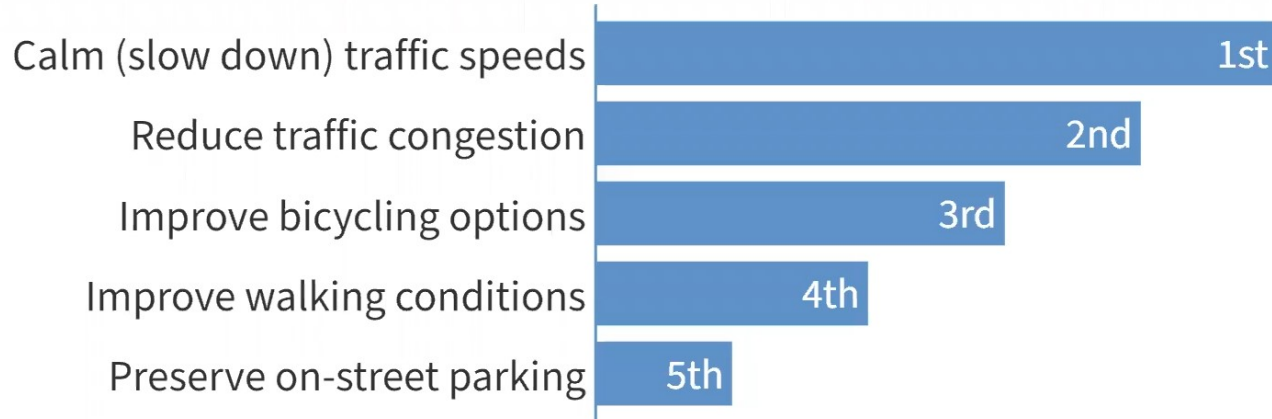


--- Project Study Area



Community-driven Priorities

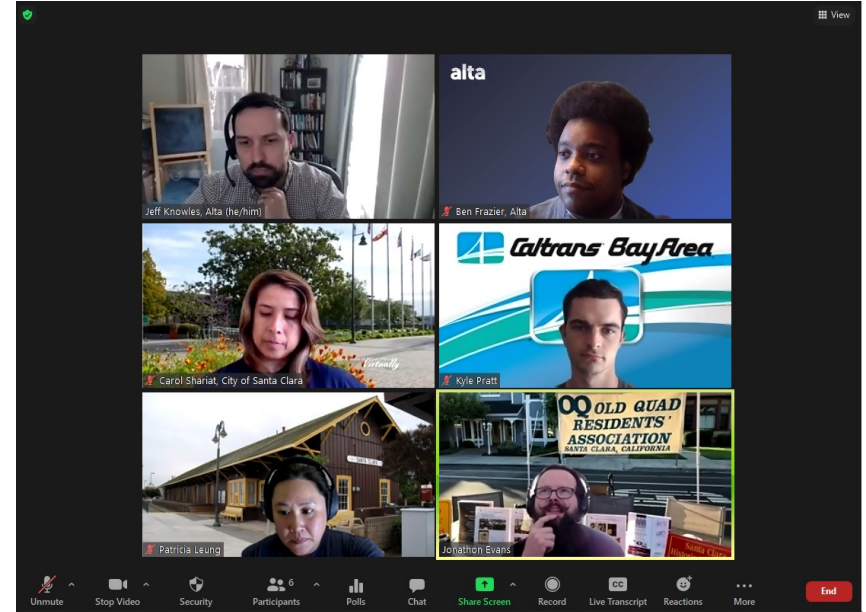
What should Pruneridge's priorities be? (rank from most important to least important)





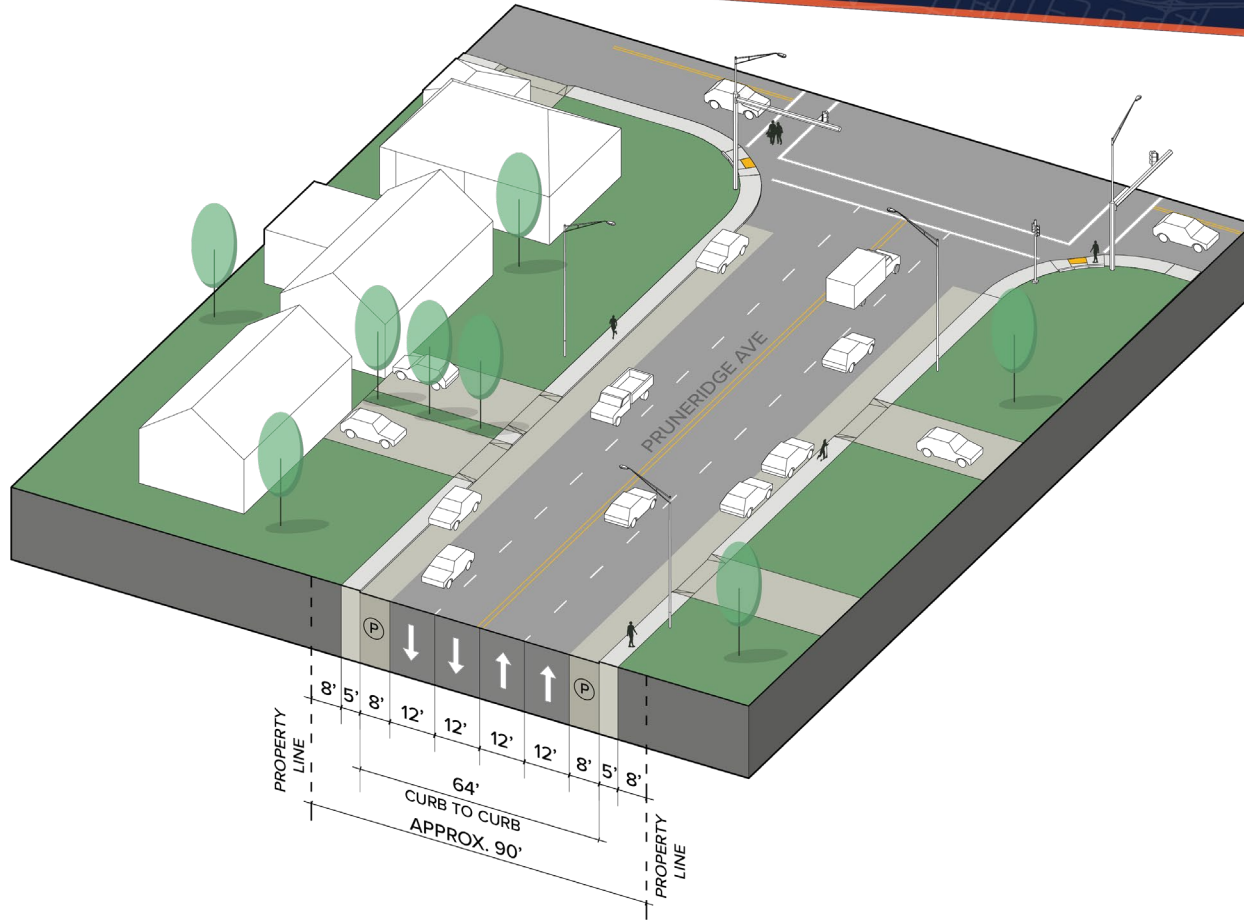
Project Updates

- Engagement to date:
 - Workshop attendance: 120 people
 - Survey responses: 738
 - Voicemails: 27
 - Emails: 68
 - Focus group meetings (5)

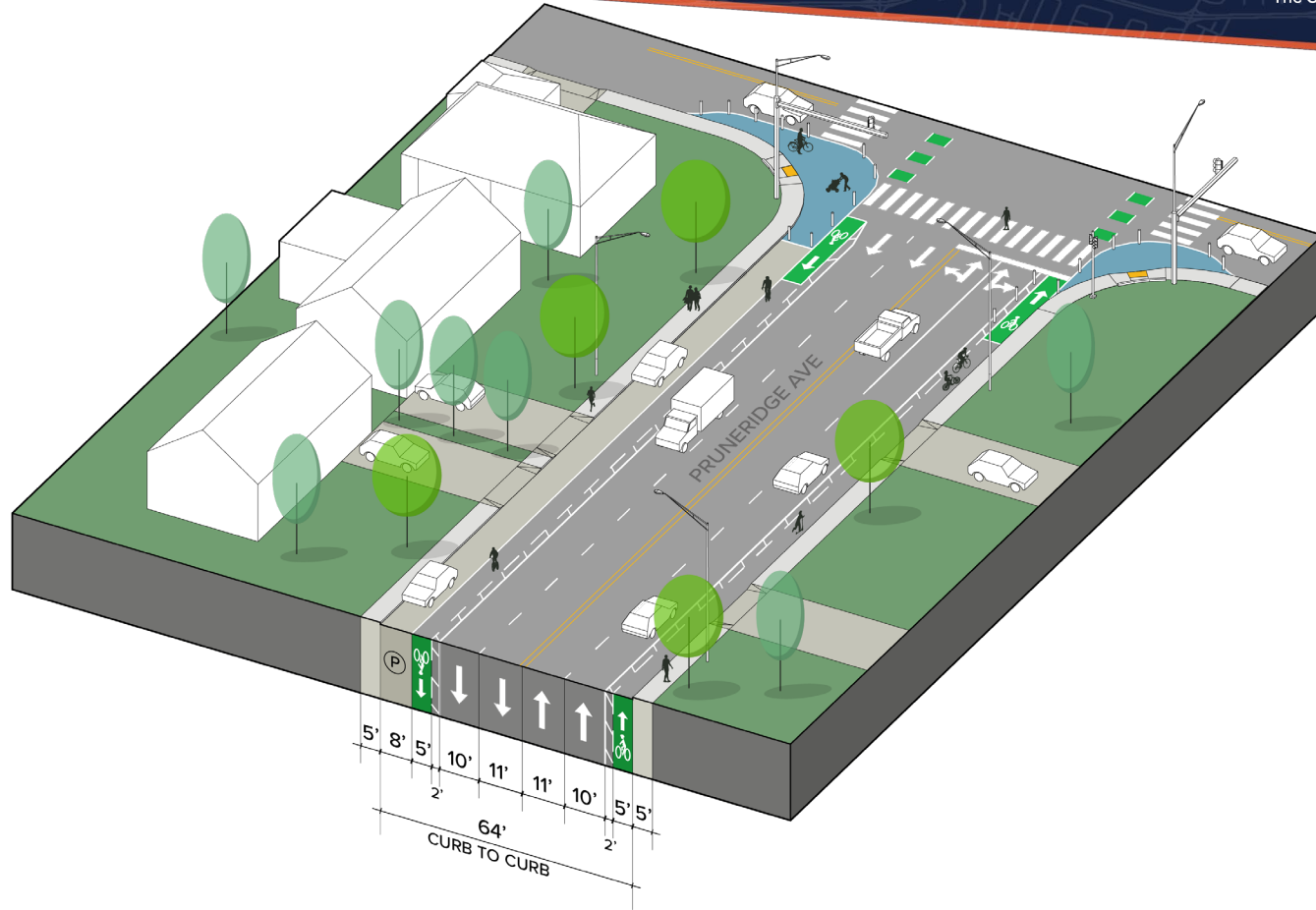


Corridor Concepts

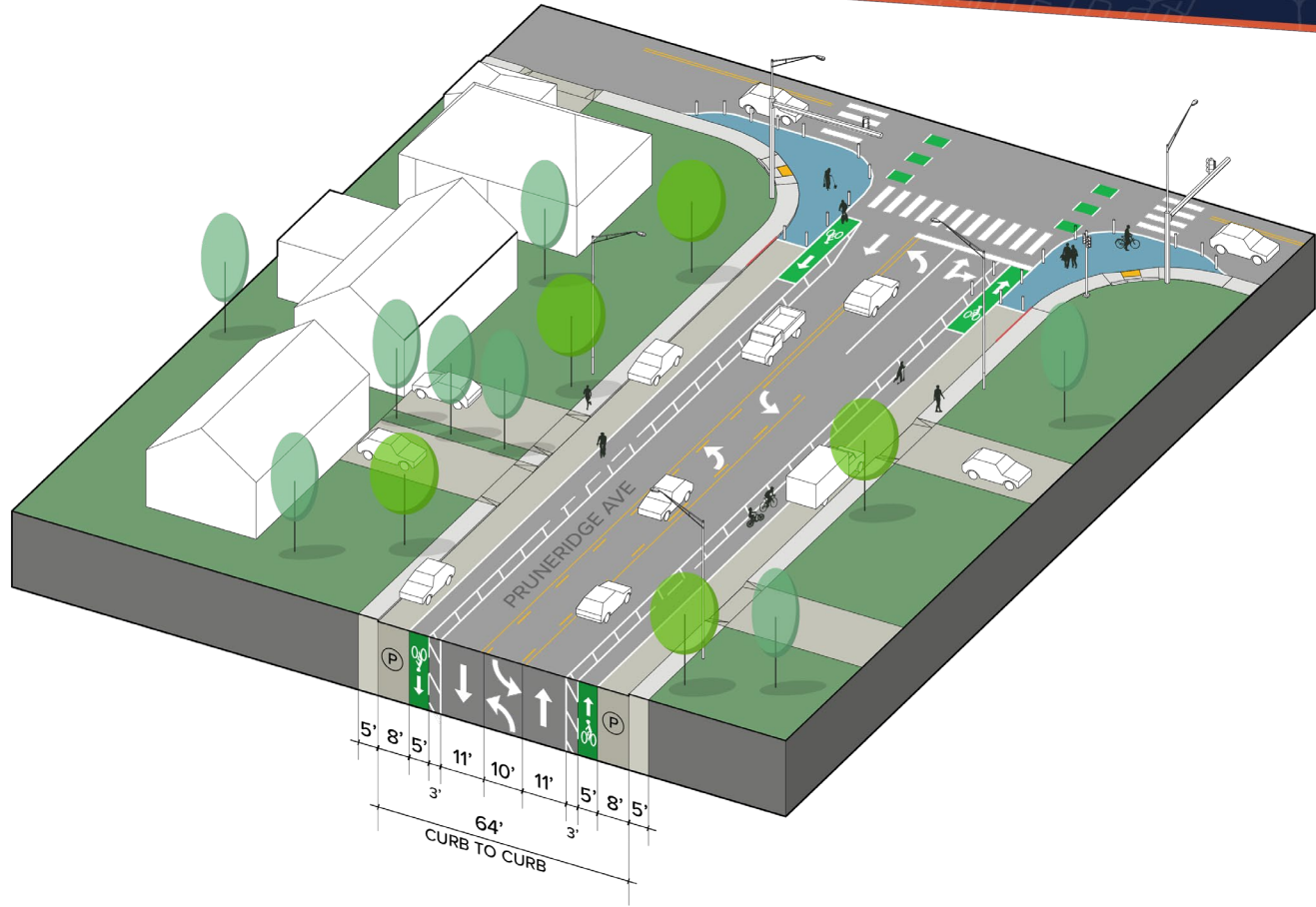
Existing/No Build Alternative



Concept 1: Four Lane Option



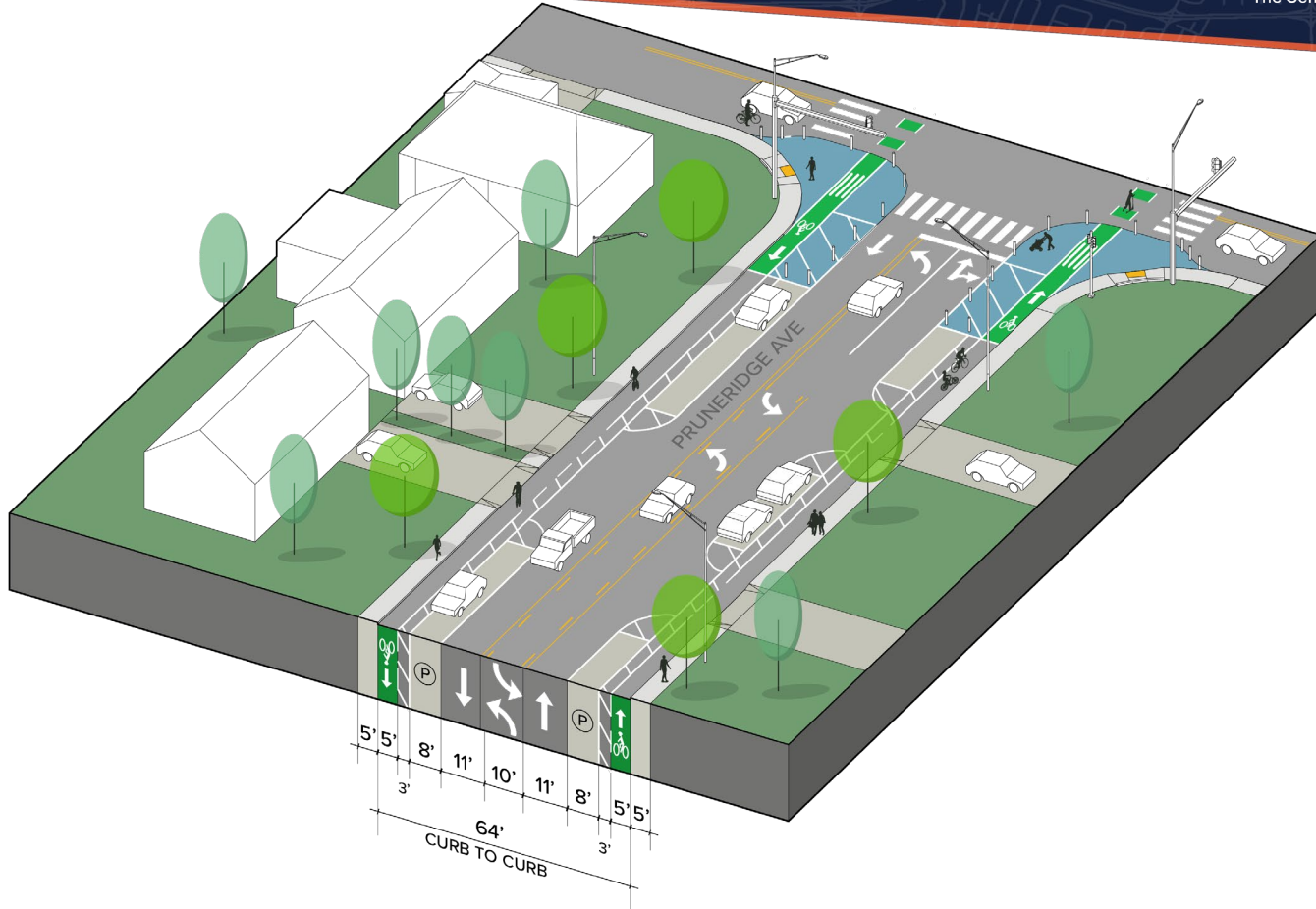
Concept 2: Two Lane Option



Concept 3: Parking Protected Option



City of
Santa Clara
The Center of What's Possible





Concept 1: Four Lane Option Poll

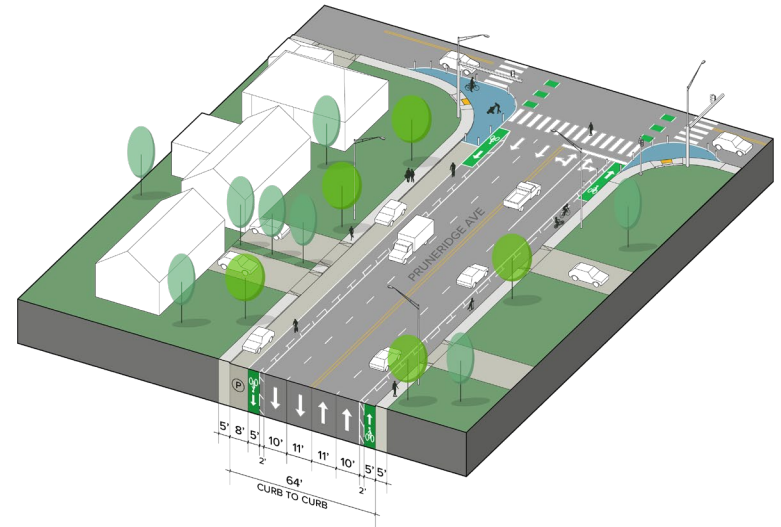
How do you describe your level of support for Concept 1?

Fully Support

Support with minor changes

Needs major changes to get my support

I do not support this concept



Start the presentation to see live content. For screen share software, share the entire screen. Get help at pollvox.com/app



Concept 2: Two Lane Option Poll

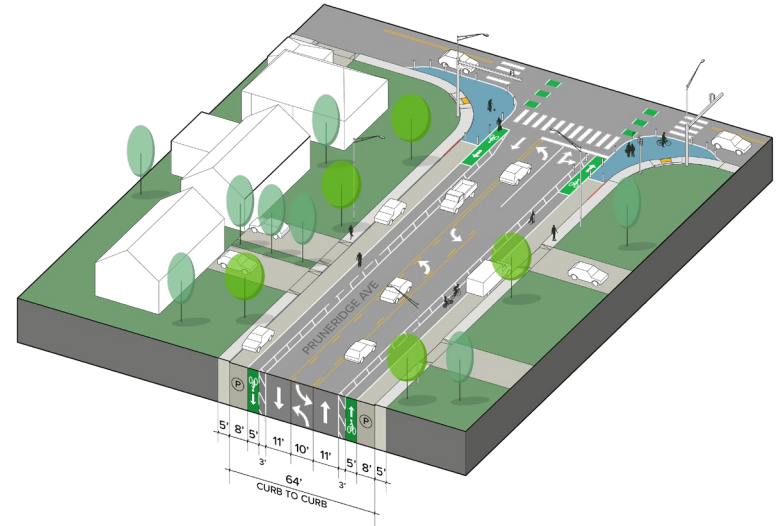
How do you describe your level of support for Concept 2?

Fully Support

Support with minor changes

Needs major changes to get my support

I do not support this concept



Start the presentation to see live content. For screen share software, share the entire screen. Get help at pollev.com/app



Concept 3: Parking Protected Option Poll

How do you describe your level of support for Concept 3?

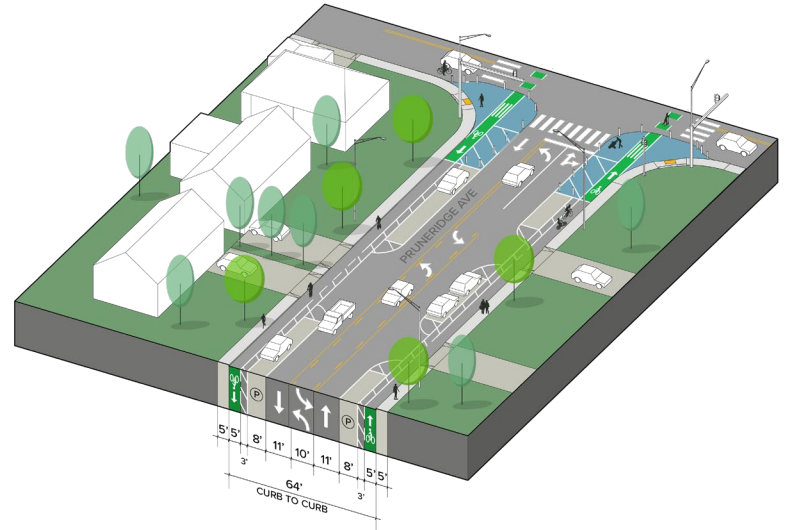
Fully Support

Support with minor
changes

Needs major changes
to get my support

I do not support this
concept

Start the presentation to see live content. For screen share software, share the entire screen. Get help at pollev.com/app





Poll

What additional information do you need to provide your opinion?

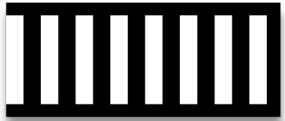
Pedestrian Improvement Tools



Crossing Improvements



Pedestrian Crossing Sign: alert motorists to the presence of a marked crosswalk. They can be placed parallel to or in advance of a crosswalk, and are particularly useful in locations where a crosswalk may not be expected by motorists.



High Visibility Crosswalk Marking: use marking patterns that are more visible to motorists than the standard parallel "transverse" markings, and help increase yielding behavior and deter encroachment.



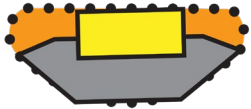
Advance Yield/Stop Lines: these inform motorists of the correct position to wait for pedestrians at marked crossings. They are used in advance of stop signs or signalized crossings.



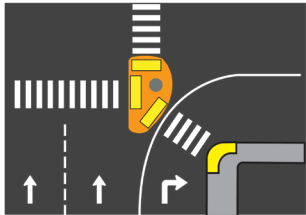
Crossing Improvements



Curb Ramp: provide a transition between the sidewalk and roadway crossings. They provide universal access for all users including pedestrians using wheeled mobility devices, small children, adults pushing strollers, and people with luggage.



Curb Extension: are extensions of the sidewalk and curb at the corners of intersections. Typically the width of the parking lane, 7' to 8'. They shorten the roadway crossing distance and make pedestrians more visible to motorists.



Improved Right-Turn Slip Lane: shortening the turn radius, requiring vehicles to turn more slowly, or removing slip lane entirely. Might include installing pedestrian refuge islands and marked pedestrian crossings so that people are clearly visible to oncoming drivers.

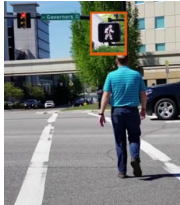


Crossing Improvements



Countdown Timer / Accessible Pedestrian Signals

(APS): Countdown timers indicate pedestrian walk phase and remaining time to cross at signalized intersections. APS devices communicate information about the WALK and DON'T WALK intervals in non-visual formats, to pedestrians who are visually impaired or have low vision.



Leading Pedestrian Interval: typically gives pedestrians a 3–7 second head start when entering an intersection with a corresponding green signal in the same direction of travel.

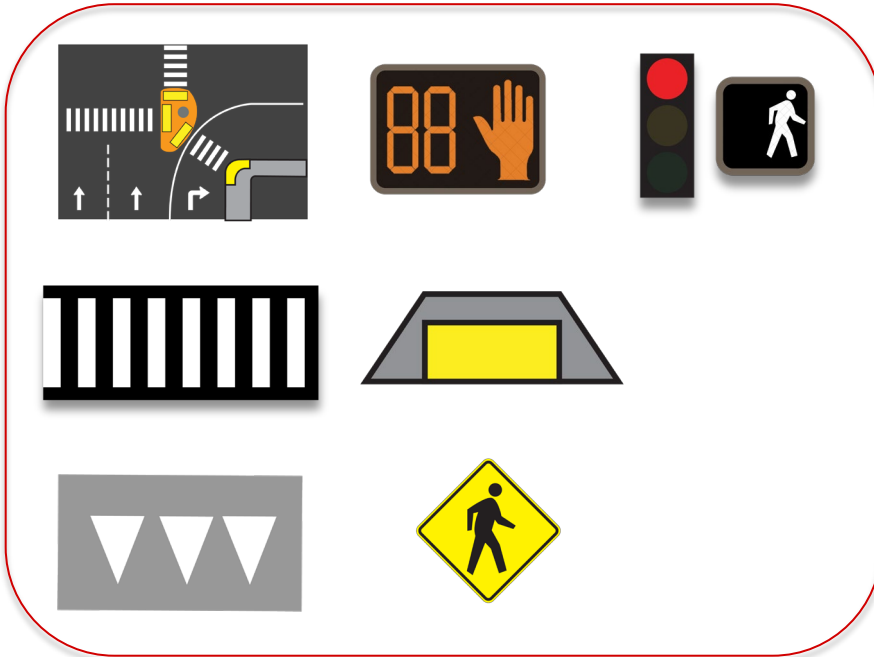


Rectangular Rapid Flash Beacon (RRFB): are user-activated pedestrian beacons that use flashing high intensity LED lights to alert motorists to the presence of pedestrians in the crosswalk. They can be installed at any uncontrolled crossing location.

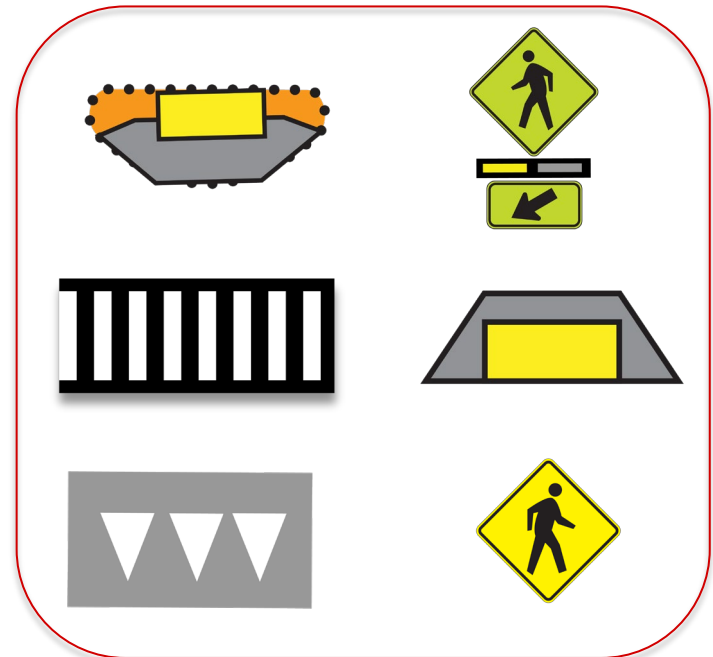


Intersection Improvements

Signalized Intersection



Unsignalized Intersection





Poll

What additional information do you need to provide your opinion?



Question and Answer Session 2

- How can you ask a question?
 1. Raise your hand to speak
 2. Type your question in the Q&A

Audio Settings ^



Raise Hand



Q&A

Leave Meeting



Next Steps

- Short Term
 - Complete technical analysis
 - Develop cost estimates
 - Share refined concepts with **YOU** and City Council
- Long Term (if Council wants to move forward)
 - Identify funding for design and construction phases



Schedule





Ways to stay involved

1. Take the survey: SantaClaraCa.gov/PruneridgeAvePlan
2. Send us an email: PruneridgeAvePlan@AltaGO.com
3. Call and leave a voice message: **(408) 320-7060**
4. Attend future community meetings



Pruneridge Ave

Thank You!

PruneridgeAvePlan@altago.com

(408) 320-7060 – voicemail only

SantaClaraCA.gov/PruneridgeAvePlan



**City of
Santa Clara**

The Center of What's Possible