



Station Area Task Force (SATF)

**Meeting #2
May 16, 2024**



Station Area Task Force

Agenda

- 6:00 pm - 6:10 pm Welcome and Introductions
- 6:10 pm – 6:20 pm Review SATF Roles and Responsibilities
- 6:20 pm – 6:30 pm Overview of the Station Area Specific Plan Project
- 6:30 pm – 7:30 pm Review of Existing Conditions Report
- 7:30 pm – 8:00 pm Public Comment
- 8:00 pm Adjournment



Station Area Task Force

Welcome and Introductions

Why are you excited to be a part of this Task Force?



SATF

Roles & Responsibilities



Roles and Responsibilities

Station Area Task Force

- **Role:** To represent a range of community stakeholders and interests and help guide the overall direction of the Precise Plan by providing:
 - High-level direction on the Plan concepts at key points;
 - Guidance on the results of the public engagement activities; and
 - Recommendations on key policy topics.
- **Responsibilities:**
 - Work as a group to try and find a common ground.
 - Review information and provide input.
 - Reach out to the broader community to gather feedback and encourage participation at in-person and online outreach events.



Station Area Specific Plan **Project Background**



Station Area Specific Plan

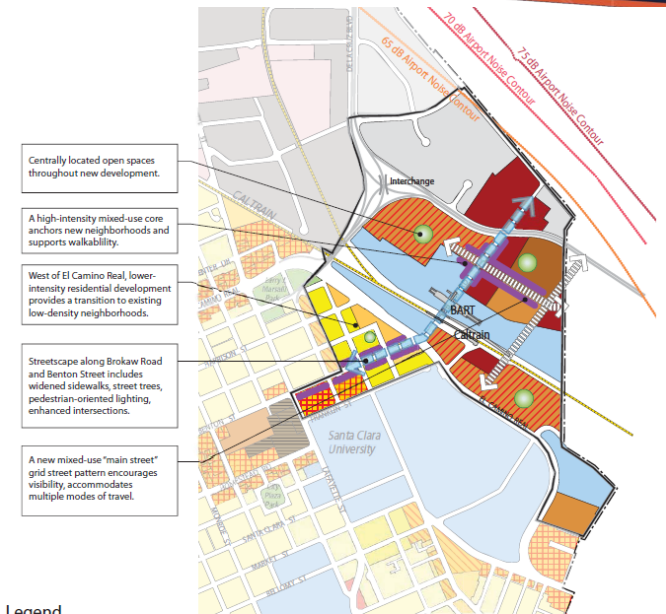
Background

2010-2035 General Plan identifies the Santa Clara Station Focus Area:

- Approximately 1,650 new residential units & 2,000,000 square feet of non-residential uses, including hotels.
- At the center is the existing Santa Clara Transit Station - served by Caltrain and Altamont Commuter Express rail lines and Valley Transportation Authority (VTA) bus service.
- The station area will also become the terminus for VTA's planned extension of the Bay Area Rapid Transit (BART) system: BART Silicon Valley Phase II (BART Phase II)

Previous Station Area Plan efforts:

- 2010: Draft Station Area Plan was developed, but ultimately not adopted by City Council
- 2019: VTA developed a Transit-Oriented Communities Study or "Playbook" for the Santa Clara Station that was presented to the City Council, but not adopted.



Legend

Land Uses Within the Focus Area

- Santa Clara Station Low Density Residential (8-18 du/ac)
- Santa Clara Station Medium Density Residential (19-36 du/ac)
- Santa Clara Station High Density Residential (37-50 du/ac)
- Santa Clara Station Very High Density Residential (51-90 du/ac)
- Santa Clara Station Regional Commercial (up to 3.0 FAR) (with an emphasis on office and hotel uses)
- Santa Clara Station Regional Mixed Use (Santa Clara Station Regional Commercial + Santa Clara Station High Density Residential) (with an emphasis on residential and commercial uses)
- Santa Clara Station Community Mixed Use Commercial (up to 0.45 FAR + Santa Clara Station Medium Density Residential)
- Santa Clara Station Public/Quasi Public (Intensity based on policies 5.3.1, 5.5.1 and 5.9.2)
- Santa Clara Station Light Industrial (up to 0.6 FAR)
- City Limits

Urban Design Features

- Focus Area Boundary
- Potential Street
- Pedestrian Connection
- Pedestrian Orientation/Active Street Frontage
- Proposed Open Space (Not to scale)

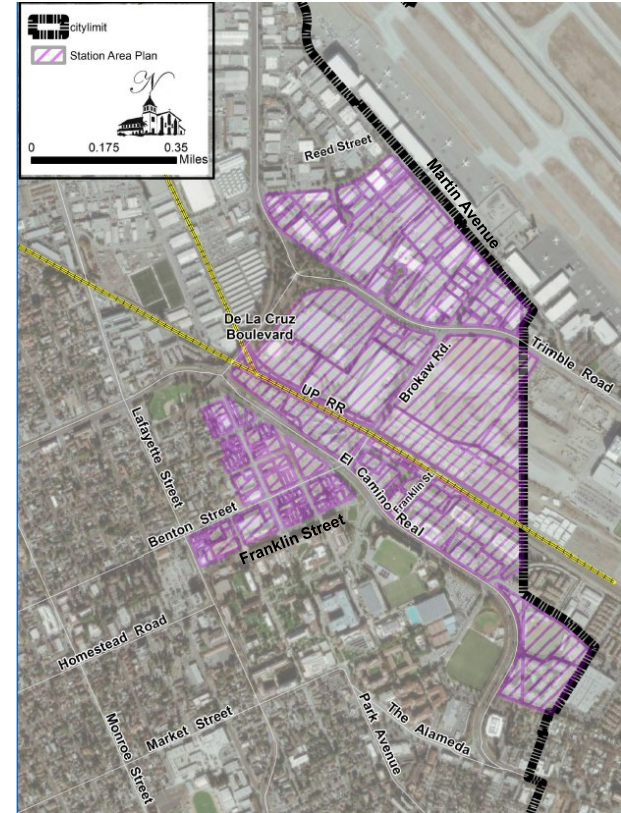




Station Area Specific Plan

Plan Boundary

- Bounded by De La Cruz Boulevard, Reed Street, Martin Avenue to the northeast, and Franklin Street and El Camino Real to the southwest
- Total Size - 244 acres (approximately)





Station Area Specific Plan **Existing Conditions Report**



Public Comment



Station Area Specific Plan **Next Steps**



Station Area Specific Plan

Next Steps

- June 20th SATF Meeting: Cancelled
- July 18th SATF Meeting
 - Brown Act Presentation
 - Election of Chair and Vice Chair
- Start project and community engagement



Station Area Task Force (SATF)

**Meeting #2
May 16, 2024**