



Santa Clara Station Area Specific Plan

Property Owner Informational Meeting

November 12, 2024



What is a Specific Plan?

A Planning document that establishes policy guidance for future redevelopment of a specific geographic area within the City

- Land uses
- Development standards and guidelines
- Transportation, infrastructure, and public facilities
- Implementation strategies

The draft Specific Plan will be reviewed and adopted by the City Council.



When will property redevelop?

There is no specific timeline for redevelopment. Redevelopment would occur when property owners choose to sell or redevelopment.

Existing buildings and businesses can remain in place in perpetuity.



Purpose:

Establish a community-based vision to shape a vibrant transit hub.

Project Goals:

- Promote multi-modal transportation and connectivity
- Increase the housing stock in the city





Study Area

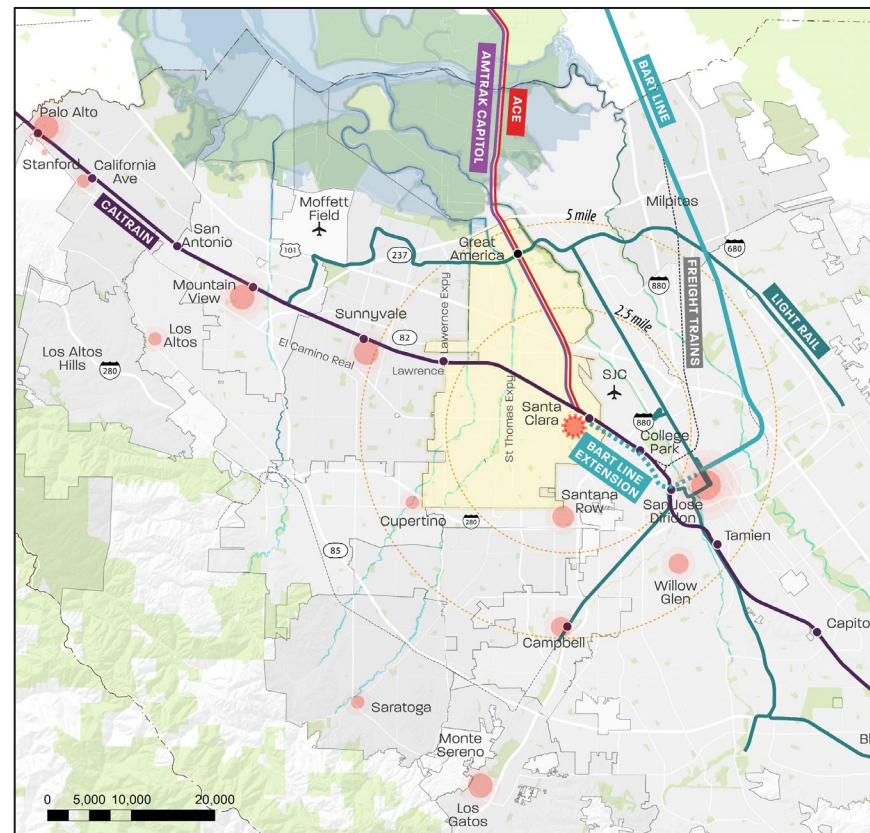
- 244-acre plan area

Existing transit services:

- Caltrain
- Capital Corridor
- ACE
- VTA buses

Future transit services/facilities:

- BART Silicon Valley Phase II (terminus station)
- Newhall Yard

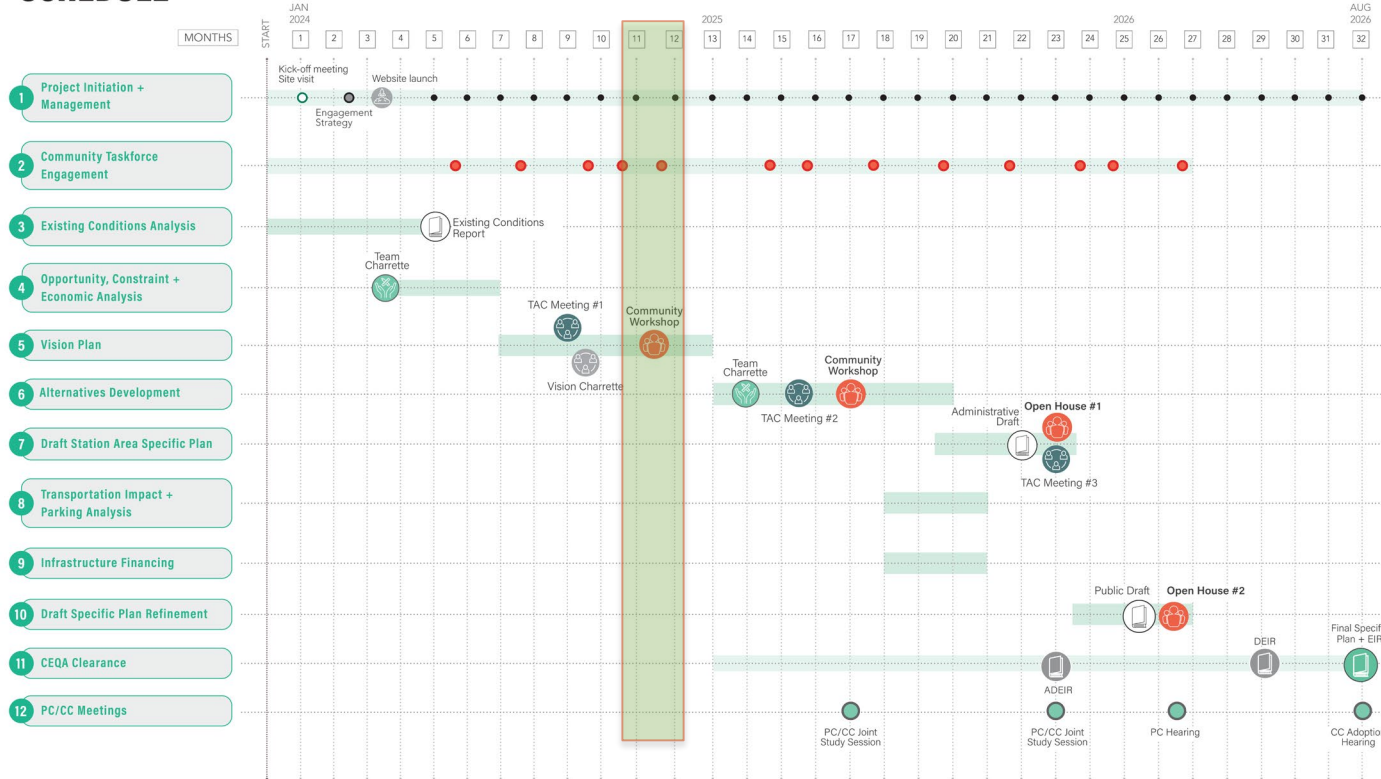




Specific Plan Scope Elements	
1	Project Initiation and Management
2	Community Task Force Engagement
3	Existing Conditions Analysis
4	Opportunities, Constraints, and Economic Analysis
5	Vision Plan
6	Alternatives Development
7	Draft Station Area Specific Plan
8	Transportation Impact and Parking Analysis
9	Infrastructure Financing
10	CEQA Clearance
11	Planning Commission and City Council Study Sessions/Hearings



SCHEDULE





Next Steps

- November 13: Community Open House
 - Santa Clara Senior Center: 6 – 8 p.m.
- Station Area Task Force (meets every third Thursday)
 - City Hall Council Chambers: 6 p.m.
 - Topic: Economic and Financial Analysis Report



Questions?

Contact Info:

Rebecca Bustos, Principal Planner

rbustos@santaclaraca.gov

408-615-2464